



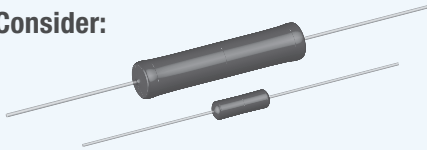
WIREWOUND RESISTORS | SNAPSHOT

Wirewound resistors perform exceptionally well in current sensing and high pulse applications. Vishay Dale has a long history of manufacturing onboard through-hole wirewound resistors. This single-page snapshot highlights various options and features of Vishay Dale onboard through-hole resistors.

COMMERCIAL

- Wide resistance range
- 5 % and 10 % tolerance
- Lowest cost option

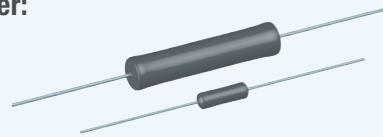
Model to Consider:
CW



INDUSTRIAL

- Wide resistance range
- High power in a small package
- Wide tolerances, including precision
- Non-inductive versions available
- Fully customizable to meet customer drawing requirements

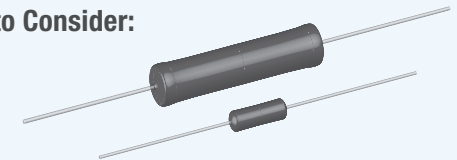
Models to Consider:
G / GN
RS / NS



MILITARY

- Established reliability and non-established reliability options available
- Precision tolerance
- Usually high cost

Models to Consider:
RWR
RW



VISHAY DALE WIREWOUND RESISTOR ADVANTAGES:

- High pulse performance
- Wide resistance values
- High temperature coating (to 350 °C)
- Tolerance as low as 0.05 %
- Customizable to meet customer application requirements
- High reliability options available
- Non-inductive options available
- RoHS-complaint without exemption
- Not ESD sensitive

RS / CW

G SERIES

Miniature series is up to 50 % smaller and > 50 % lighter than the RS / CW series

APPLICATIONS



INDUSTRIAL



CONSUMER



AUTOMOTIVE



MILITARY



TELECOMMUNICATIONS



MEDICAL