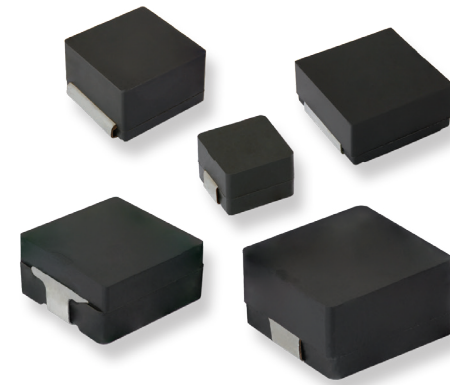





CAPABILITIES AND CUSTOM OPTIONS

SGIHLP - SPACE-GRADE POWER INDUCTORS

Application	Advantage
Filter	<ul style="list-style-type: none"> • Lowest DCR for improved efficiency • High saturation, reduced PCB area / profile
Energy storage	<ul style="list-style-type: none"> • Highest saturation, reduced PCB area / profile • Low core loss for improved efficiency • High frequency operation for improved efficiency



SPECIALTY DEVICES

Design Advantage	Solution	Series
High power density	Molded inductor	SGIHLP 

More information concerning the SGIHLP can be found [“here”](#).
 For technical information please contact magnetics@vishay.com.

CUSTOM OPTIONS

Capabilities
<ul style="list-style-type: none"> • Profiles • Inductance values • DCR options • Tight tolerance • Polarity mark • Specialized test conditions and requirements

Temperature Range (°C)	Space MIL-STD- 981
-55 to +180	81S