



# AUTOMOTIVE PRE-CHARGE / DISCHARGE RESISTOR

## CHASSIS-MOUNT, HIGH POWER WIREWOUND

### FEATURES



**AEC-Q200 Qualified**

**Complete Welded Construction**

**Excellent Stability (< 1 %)**

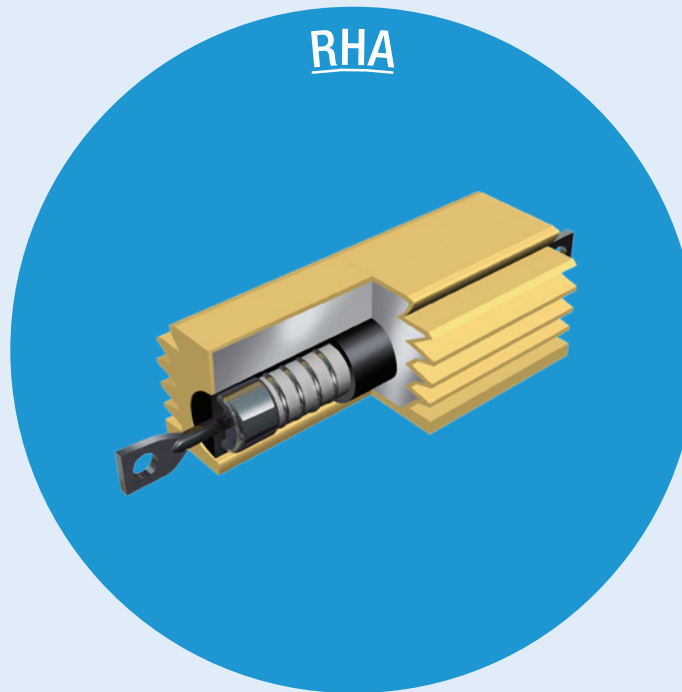
**Superior Pulse Performance**

**High Power (Up to 50 W)**

**Wide Resistance Value Range  
(0.1  $\Omega$  - 39.2 k $\Omega$ )**

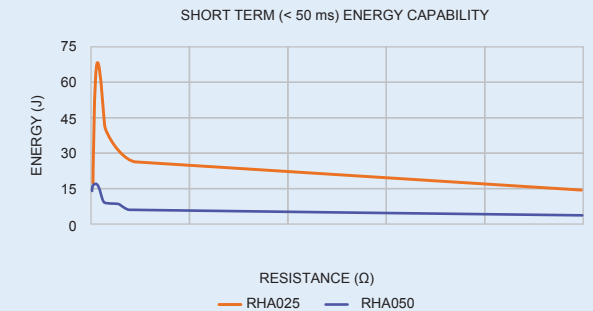
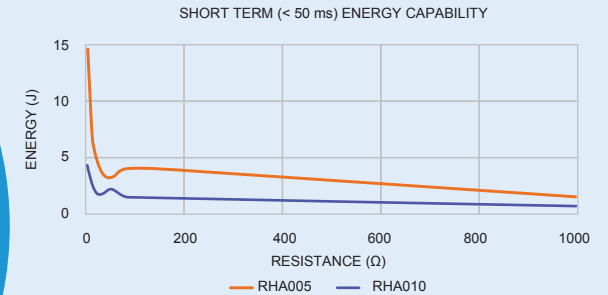
**Not ESD-Sensitive**

**Can Be Used With or Without A Heatsink  
(Must Be Derated Accordingly)**



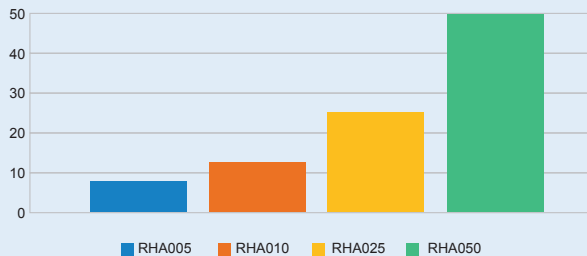
**RHA**

### PULSE CAPABILITY – SHORT TERM (< 50 ms)



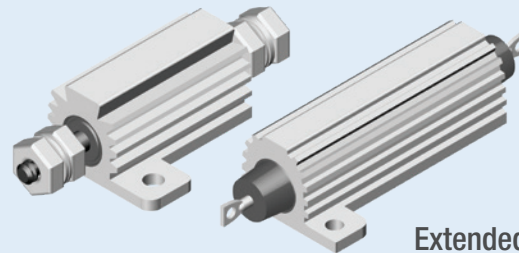
### SIZE AND POWER RATINGS

RHA POWER RATING AT 25 °C



### CUSTOM OPTIONS

Screw Terminals



Extended  
Mold Compound

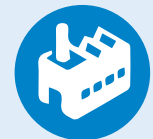
### APPLICATIONS



CONSUMER



AUTOMOTIVE



INDUSTRIAL

For technical questions: [ww2aresistors@vishay.com](mailto:ww2aresistors@vishay.com)

© 2022 VISHAY INTERTECHNOLOGY, INC. ALL RIGHTS RESERVED.

IG4553806180-2202