



Automotive Photovoltaic MOSFET Driver

With Integrated Fast Turn-Off

FEATURES

OPEN CIRCUIT VOLTAGE OF **8.5 V**

SHORT CIRCUIT CURRENT AT **16 μ A**

TURN-ON TIME: **32 μ s**

TURN-OFF TIME: **71 μ s**

AEC-Q102 QUALIFIED

ISOLATION VOLTAGE OF **3750 V**



APPLICATIONS

- Battery management systems
- Custom solid-state relays
- Drive small signal MOSFETs
- Gate drive for SiC and high power MOSFETs



AUTOMOTIVE



ENERGY SECTOR



KEY BENEFITS

WIDE OPERATING TEMPERATURE RANGE: **-40 °C TO +125 °C**

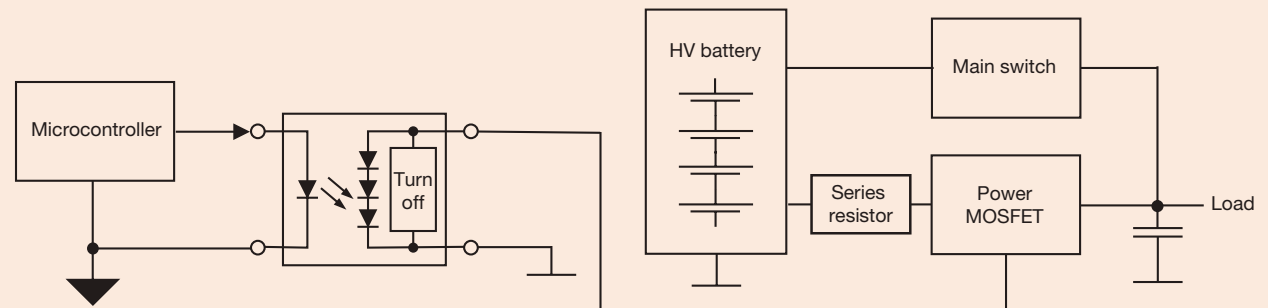
NO EXTERNAL POWER SUPPLY NEEDED

MICROCONTROLLER COMPATIBLE

BUILT-IN TURN-OFF CIRCUIT TO ACHIEVE FAST TURN-OFF

SMALL FOOTPRINT AND EASY APPLICATION

APPLICATION SCHEMATIC



For technical questions: optocoupleranswers@vishay.com

© 2023 VISHAY INTERTECHNOLOGY, INC. ALL RIGHTS RESERVED.