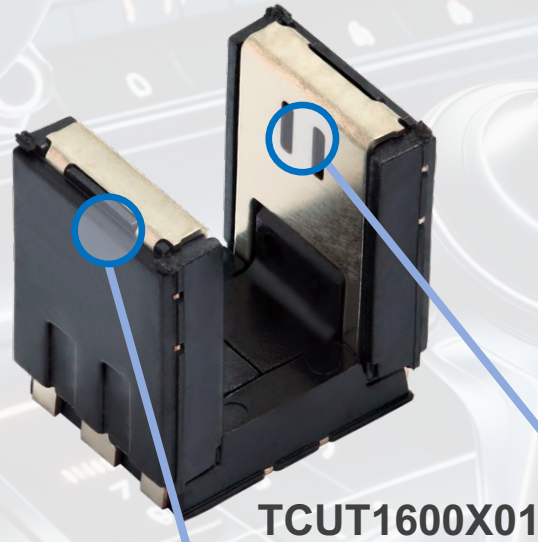


Miniature Light Barrier for Multiple Buttons and Wheels

Dual-Channel Transmissive Optical Sensors



The DNA of tech.®



TCUT1600X01

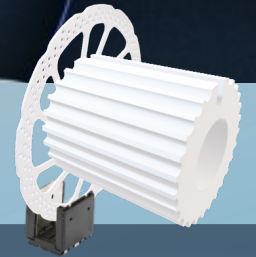
The package integrates one emitter alongside 1 to 4 phototransistors, each providing a distinct signal output.



Infrared Emitter



2x
Phototransistor



The TCUT sensors can be utilized for various functions within a car's interior. For example, endless turn knobs on the steering wheel are increasingly popular. In addition, different types of buttons and gear selection mechanisms in the center console can be operated using multiple TCUT sensors. The main advantage of using optical transmissive sensors is the elimination of mechanical wear.



[Datasheet](#)



[Application Note](#)