

Harmonic Filter Resistors

INFORMATION

VISHAY INTERTECHNOLOGY, INC.

Vishay Milwaukee Series:

- GRE1, GRES: <http://www.vishay.com/doc?31833>

What They Do

- Within industrial electrical networks, harmonic filter resistors are used to remove unwanted harmonics from the system

Electrical Capabilities

- Insulated for system voltages
- Non-magnetic material used to reduce inductance
- Tied live design to eliminate floating voltages
- Grid and wirewound resistor technologies

Key Parameters

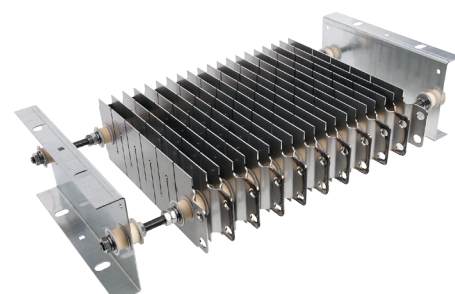
- Rugged IP23-rated outdoor enclosures
- Stainless steel resistor elements offer high thermal capacity

Application Specifics

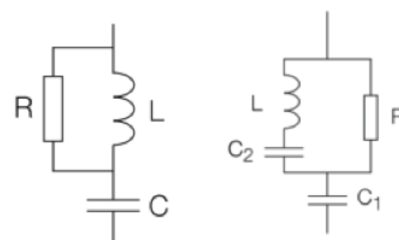
- Found in substations within the oil & gas, industrial, and utility markets
- Harmonic filter banks use capacitors, inductors, and resistors to stabilize any interference or distortion present in electrical networks

How Can We Help

- Do you use grid-style filter resistors in your high-pass, low-pass, band-pass, and c-type filters or double-tuned harmonic filters?
- Are you typically buying IP00 open-mount resistors or resistors housed in IP20 or IP23 enclosures?
- Do you have any special requirements (termination, stands, extra creep/strike, seismic, pollution, etc.)



Schematic



SALES INFORMATION





Harmonic Filter Resistors

COMPLETE FORM TO RECEIVE A QUOTATION

VISHAY INTERTECHNOLOGY, INC.

System volts (V_{L-L}): _____
(Line-to-line Voltage)

Line-neutral volts (V_{L-N}): _____
(Line to neutral = $V_{L-L} / \text{sqrt}(3)$)

Single-Series Resistor Per Phase Configuration

Current (A): _____
(Per phase)

Resistance, VL-N/A (Ω): _____
(Per phase)

C-Type or Parallel Path Per Phase Configuration

Current (A): _____ per path
(Phase current / 2)

Resistance, VL-N/A (Ω): _____ per path
*(Phase resistance * 2)*

Enclosure Info (Standard Underlined)

Type: Indoor (IP20) Outdoor (IP23) Frames (IP00)

Finish: Mill galvanized Stainless steel Other

Customizations:


Space limitations: _____

Elevation above sea level: _____ Feet


Enclosure entry: Bottom hub Top bushing Side bushing
(Bottom entry / exit is standard)

Enclosure exit: Bottom hub Top bushing Side bushing
(Bottom entry / exit is standard)

Station post insulators: _____ Provided by customer or provided by Vishay

 1-888-616-6666

 vishaymilwaukeeeresistor@vishay.com

 8920 W. Heather Avenue
Milwaukee, WI 53224

SALES INFORMATION

