

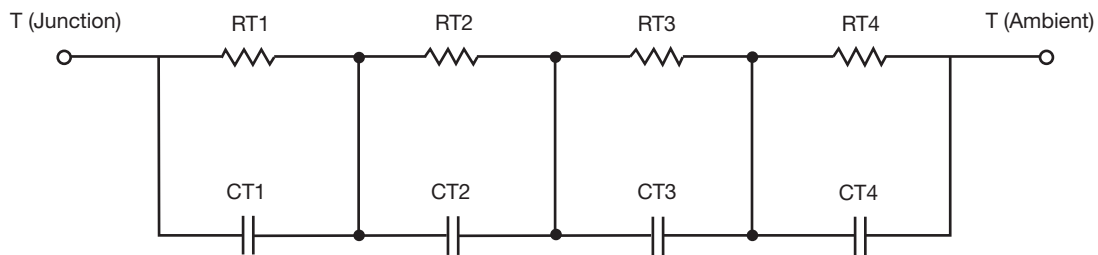
R-C Thermal Model Parameters

DESCRIPTION

The parametric values in the R-C thermal model have been derived using curve-fitting techniques. R-C values for the electrical circuit in the Foster/tank and Cauer/filter configurations are included. When implemented in P-SPICE, these values have matching characteristic curves to the single-pulse transient thermal impedance curves for the MOSFET.

These RC values can be used in the P-SPICE simulation to evaluate the thermal behavior of the MOSFET junction temperature under a defined power profile. These techniques are described in application note AN609, "Thermal Simulation of Power MOSFETs on the P-SPICE Platform".

R-C THERMAL MODEL FOR TANK CONFIGURATION



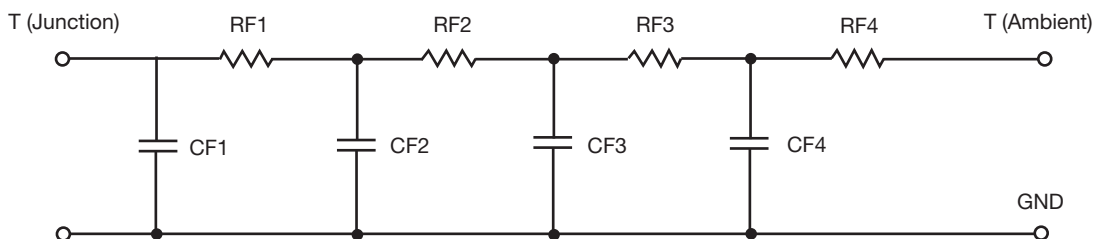
R-C VALUES FOR TANK CONFIGURATION			
THERMAL RESISTANCE (°C/W)			
Junction to	Ambient	Case	Foot
RT1	7.9344	N/A	16.5723
RT2	27.8340	N/A	5.8542
RT3	24.8157	N/A	10.5182
RT4	49.4159	N/A	11.7903
THERMAL CAPACITANCE (Joules/°C)			
Junction to	Ambient	Case	Foot
CT1	408.5371u	N/A	63.1322m
CT2	7.6823m	N/A	223.1259u
CT3	110.3093m	N/A	14.5653m
CT4	1.6926	N/A	4.6830m

Note

N/A indicates not applicable

This document is intended as a SPICE modeling guideline and does not constitute a commercial product datasheet. Designers should refer to the appropriate datasheet of the same number for guaranteed specification limits.

R-C THERMAL MODEL FOR FILTER CONFIGURATION



R-C VALUES FOR FILTER CONFIGURATION			
THERMAL RESISTANCE (°C/W)			
Junction to	Ambient	Case	Foot
RF1	13.5605	N/A	6.0360
RF2	34.5635	N/A	15.9006
RF3	31.4724	N/A	5.2784
RF4	30.2314	N/A	17.3447
THERMAL CAPACITANCE (Joules/°C)			
Junction to	Ambient	Case	Foot
CF1	758.8636u	N/A	178.3756u
CF2	11.5535m	N/A	2.9012m
CF3	393.6521m	N/A	706.2953u
CF4	3.3255	N/A	41.3442m

Note

N/A indicates not applicable

