

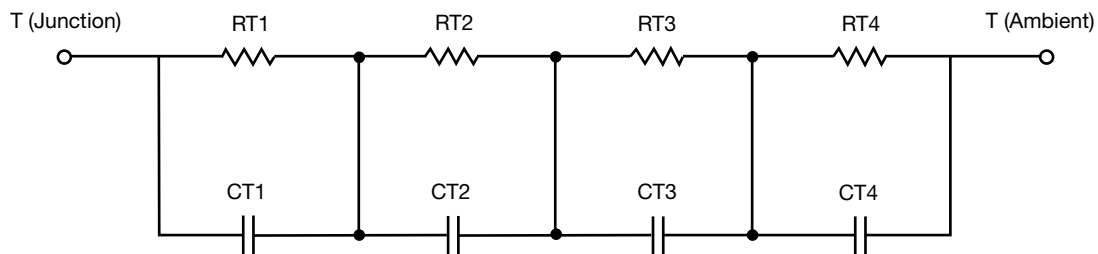
## R-C Thermal Model Parameters

### DESCRIPTION

The parametric values in the R-C thermal model have been derived using curve-fitting techniques. R-C values for the electrical circuit in the Foster/tank and Cauer/filter configurations are included. When implemented in PSpice, these values have matching characteristic curves to the single-pulse transient thermal impedance curves for the MOSFET.

These RC values can be used in the PSpice simulation to evaluate the thermal behavior of the MOSFET junction temperature under a defined power profile. These techniques are described in application note AN609, "Thermal Simulation of Power MOSFETs on the PSpice Platform".

### R-C THERMAL MODEL FOR TANK CONFIGURATION



R-C VALUES FOR TANK CONFIGURATION			
THERMAL RESISTANCE (°C/W)			
Junction to	Ambient	Case	Foot
RT1	16.6684	47.4846m	n/a
RT2	206.3476m	241.8309m	n/a
RT3	35.9530	139.5890m	n/a
RT4	2.6348	365.9919m	n/a
THERMAL CAPACITANCE (Joules/°C)			
Junction to	Ambient	Case	Foot
CT1	620.3890	5.4627m	n/a
CT2	13.8795m	5.8835m	n/a
CT3	2.4034	1.5861	n/a
CT4	414.0579m	34.1516m	n/a

#### Note

- n/a indicates not applicable

This document is intended as a SPICE modeling guideline and does not constitute a commercial product datasheet. Designers should refer to the appropriate datasheet of the same number for guaranteed specification limits.



R-C THERMAL MODEL FOR FILTER CONFIGURATION



R-C VALUES FOR FILTER CONFIGURATION			
THERMAL RESISTANCE (°C/W)			
Junction to	Ambient	Case	Foot
RF1	713.5911m	31.0044m	n/a
RF2	2.0301	294.4443m	n/a
RF3	2.0159	363.4230m	n/a
RF4	35.0598	110.8632m	n/a
THERMAL CAPACITANCE (Joules/°C)			
Junction to	Ambient	Case	Foot
CF1	101.8323m	669.2423u	n/a
CF2	246.5979m	3.2703m	n/a
CF3	356.9224m	29.7288m	n/a
CF4	1.8936	3.0455	n/a

Note

- n/a indicates not applicable

