

## P-Channel 30 V (D-S) MOSFET

### DESCRIPTION

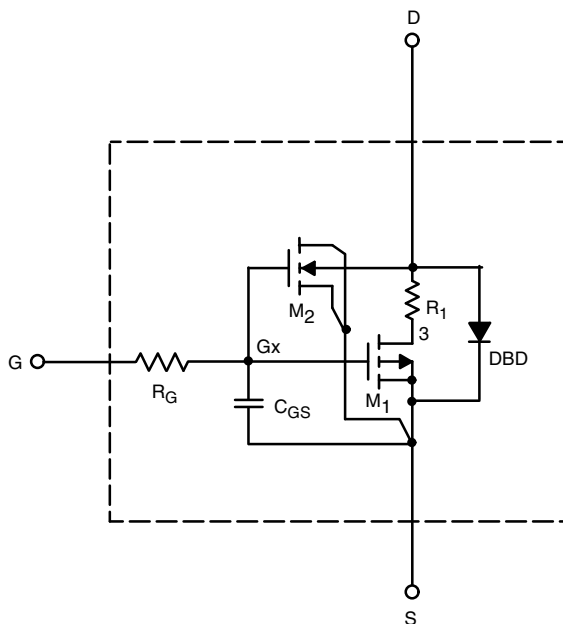
The attached SPICE model describes the typical electrical characteristics of the p-channel vertical DMOS. The subcircuit model is extracted and optimized over the - 55 °C to 125 °C temperature ranges under the pulsed 0 V to 10 V gate drive. The saturated output impedance is best fit at the gate bias near the threshold voltage.

A novel gate-to-drain feedback capacitance network is used to model the gate charge characteristics while avoiding convergence difficulties of the switched  $C_{gd}$  model. All model parameter values are optimized to provide a best fit to the measured electrical data and are not intended as an exact physical interpretation of the device.

### CHARACTERISTICS

- P-Channel Vertical DMOS
- Macro Model (Subcircuit Model)
- Level 3 MOS
- Apply for both Linear and Switching Application
- Accurate over the - 55 °C to + 125 °C Temperature Range
- Model the Gate Charge

### SUBCIRCUIT MODEL SCHEMATIC



### Note

- This document is intended as a SPICE modeling guideline and does not constitute a commercial product datasheet. Designers should refer to the appropriate datasheet of the same number for guaranteed specification limits.



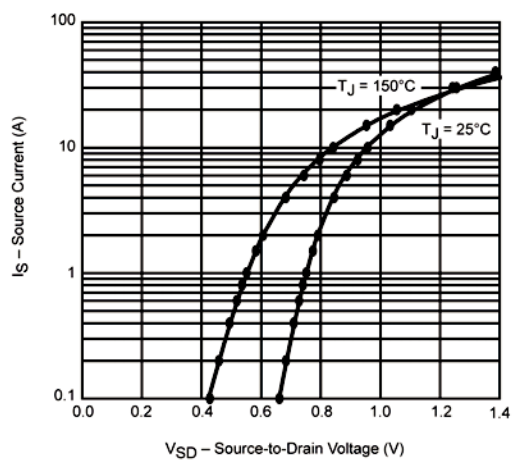
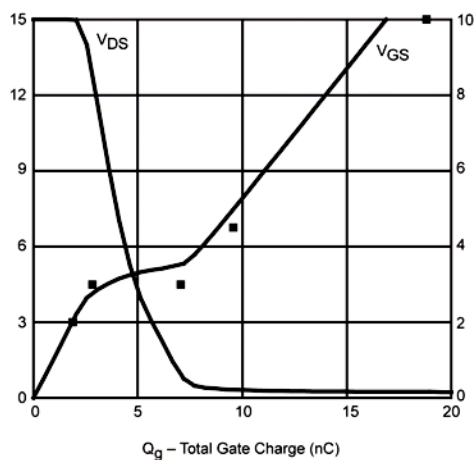
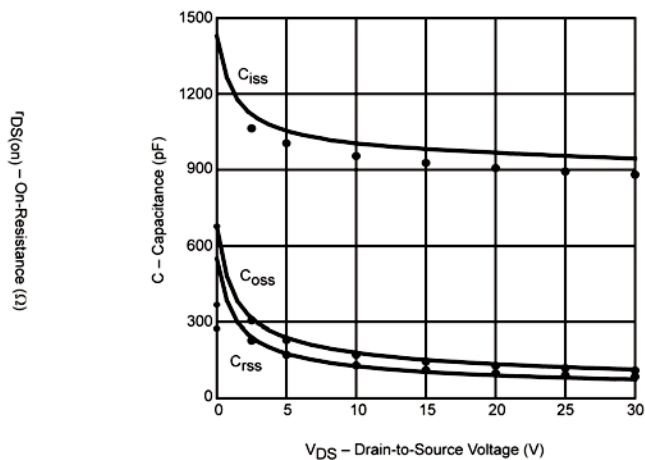
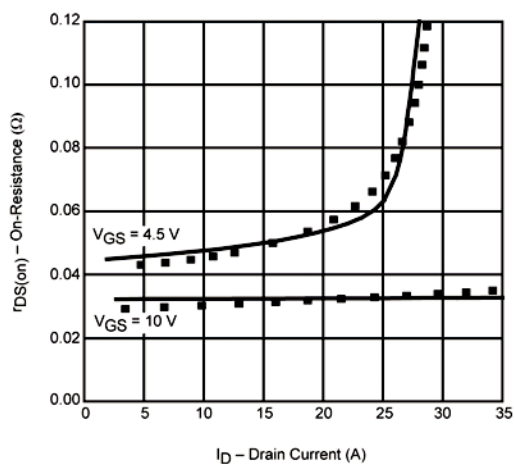
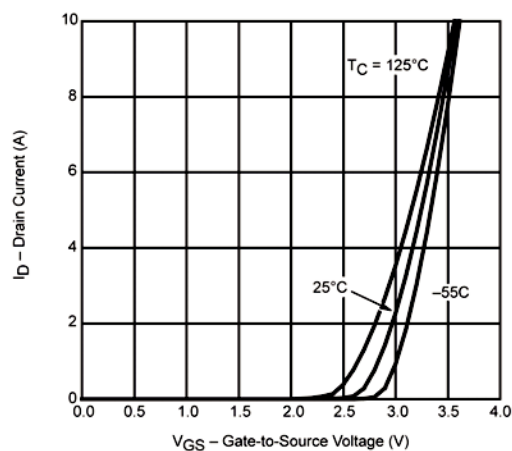
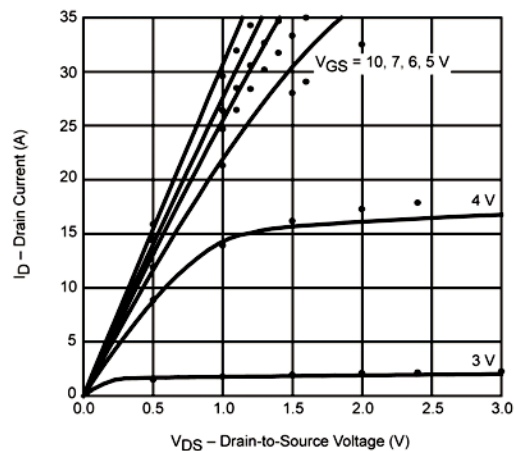
SPECIFICATIONS ( $T_J = 25^\circ\text{C}$ , unless otherwise noted)					
PARAMETER	SYMBOL	TEST CONDITIONS	SIMULATED DATA	MEASURED DATA	UNIT
<b>Static</b>					
Gate Threshold Voltage	$V_{GS(th)}$	$V_{DS} = V_{GS}$ , $I_D = -250\ \mu\text{A}$	2.1	-	V
On-State Drain Current <sup>a</sup>	$I_{D(on)}$	$V_{DS} \geq -5\ \text{V}$ , $V_{GS} = -4.5\ \text{V}$	145	-	A
Drain-Source On-State Resistance <sup>a</sup>	$R_{DS(on)}$	$V_{GS} = -10\ \text{V}$ , $I_D = -5.3\ \text{A}$	0.032	0.029	$\Omega$
		$V_{GS} = -4.5\ \text{V}$ , $I_D = -4.2\ \text{A}$	0.046	0.046	
Forward Transconductance <sup>a</sup>	$g_{fs}$	$V_{DS} = -15\ \text{V}$ , $I_D = -5.3\ \text{A}$	14	15	S
Diode Forward Voltage	$V_{SD}$	$I_S = -6.3\ \text{A}$	-0.9	-0.8	V
<b>Dynamic<sup>b</sup></b>					
Input Capacitance	$C_{iss}$	$V_{DS} = -15\ \text{V}$ , $V_{GS} = 0\ \text{V}$ , $f = 1\ \text{MHz}$	983	950	pF
Output Capacitance	$C_{oss}$		153	150	
Reverse Transfer Capacitance	$C_{rss}$		105	120	
Total Gate Charge	$Q_g$	$V_{DS} = -15\ \text{V}$ , $V_{GS} = -10\ \text{V}$ , $I_D = -7.9\ \text{A}$	17	19	nC
			9	10	
Gate-Source Charge	$Q_{gs}$	$V_{DS} = -15\ \text{V}$ , $V_{GS} = -4.5\ \text{V}$ , $I_D = -7.9\ \text{A}$	3	3	
Gate-Drain Charge	$Q_{gd}$		4.5	4.5	

**Notes**

- a. Pulse test; pulse width  $\leq 300\ \mu\text{s}$ , duty cycle  $\leq 2\ \%$ .  
b. Guaranteed by design, not subject to production testing.



## COMPARISON OF MODEL WITH MEASURED DATA ( $T_J = 25^\circ\text{C}$ , unless otherwise noted)



### Note

- Dots and squares represent measured data.