



R-C Thermal Model Parameters

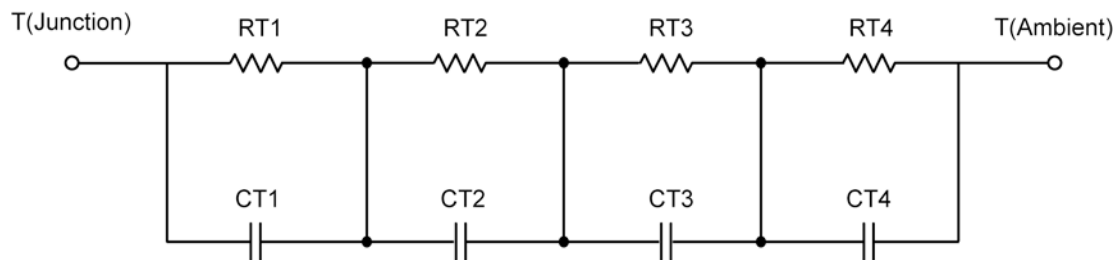
DESCRIPTION

The parametric values in the R-C thermal model have been derived using curve-fitting techniques. These techniques are described in "[A Simple Method of Generating Thermal Models for a Power MOSFET](#)"[1]. When implemented in P-Spice, these values have matching characteristic curves to the Single Pulse Transient Thermal Impedance curves for the MOSFET.

R-C values for the electrical circuit in the Foster/Tank and Cauer/Filter configurations are included.

Note:
For a detailed explanation of implementing these values in P-Spice, refer to [Application Note AN609 Thermal Simulations Of Power MOSFETs on P-Spice Platform](#).

R-C THERMAL MODEL FOR TANK CONFIGURATION

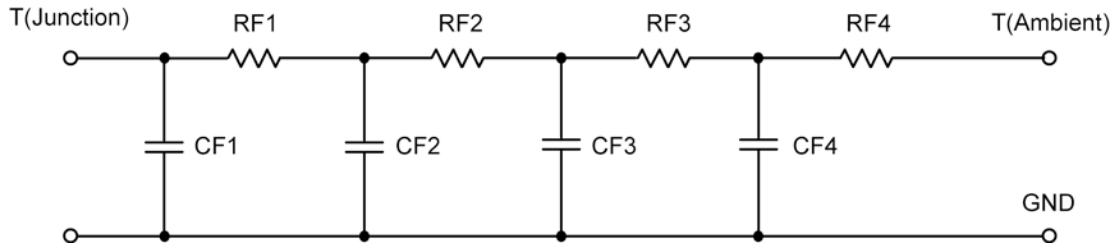


R-C VALUES FOR TANK CONFIGURATION			
Thermal Resistance (°C/W)			
Junction to	Ambient	Case	Foot
RT1	N/A	126.0154 m	N/A
RT2	N/A	23.4102 m	N/A
RT3	N/A	7.9403 m	N/A
RT4	N/A	242.6342 m	N/A
Thermal Capacitance (Joules/°C)			
Junction to	Ambient	Case	Foot
CT1	N/A	82.2322 m	N/A
CT2	N/A	4.2293 m	N/A
CT3	N/A	112.2630 m	N/A
CT4	N/A	5.0196 m	N/A

This document is intended as a SPICE modeling guideline and does not constitute a commercial product data sheet. Designers should refer to the appropriate data sheet of the same number for guaranteed specification limits.



R-C THERMAL MODEL FOR FILTER CONFIGURATION



R-C VALUES FOR FILTER CONFIGURATION			
Thermal Resistance (°C/W)			
Junction to	Ambient	Case	Foot
RF1	N/A	143.2535 m	N/A
RF2	N/A	140.5543 m	N/A
RF3	N/A	13.6095 m	N/A
RF4	N/A	102.5828 m	N/A
Thermal Capacitance (Joules/°C)			
Junction to	Ambient	Case	Foot
CF1	N/A	2.6767 m	N/A
CF2	N/A	4.1465 m	N/A
CF3	N/A	1.8814 m	N/A
CF4	N/A	80.7996 m	N/A

Note: NA indicates not applicable

Reference:

[1] "A Simple Method of Generating Thermal Models for a Power MOSFET" by Wharton McDaniel and Kandarp Pandya. IEEE / SEMITHERM 2002

