

## P-Channel 20 V (D-S) MOSFET

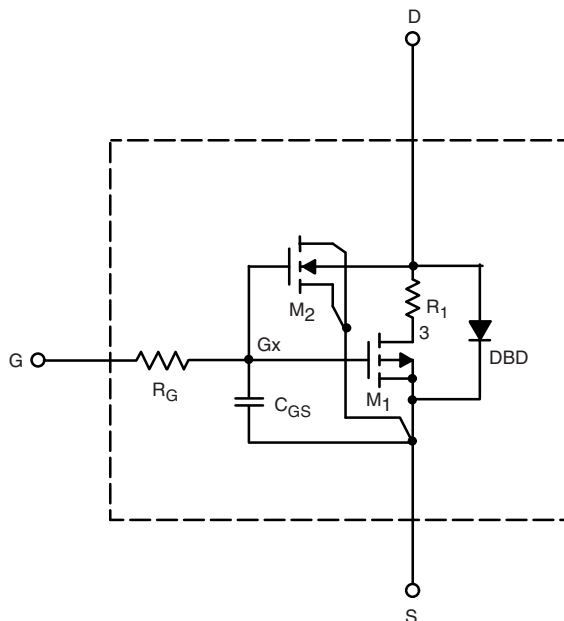
### DESCRIPTION

The attached SPICE model describes the typical electrical characteristics of the p-channel vertical DMOS. The subcircuit model is extracted and optimized over the - 55 °C to + 125 °C temperature ranges under the pulsed 0 V to 5 V gate drive. The saturated output impedance is best fit at the gate bias near the threshold voltage. A novel gate-to-drain feedback capacitance network is used to model the gate charge characteristics while avoiding convergence difficulties of the switched  $C_{gd}$  model. All model parameter values are optimized to provide a best fit to the measured electrical data and are not intended as an exact physical interpretation of the device.

### CHARACTERISTICS

- P-Channel Vertical DMOS
- Macro Model (Subcircuit Model)
- Level 3 MOS
- Apply for both Linear and Switching Application
- Accurate over the - 55 °C to + 125 °C Temperature Range
- Model the Gate Charge

### SUBCIRCUIT MODEL SCHEMATIC



### Note

- This document is intended as a SPICE modeling guideline and does not constitute a commercial product datasheet. Designers should refer to the appropriate datasheet of the same number for guaranteed specification limits.



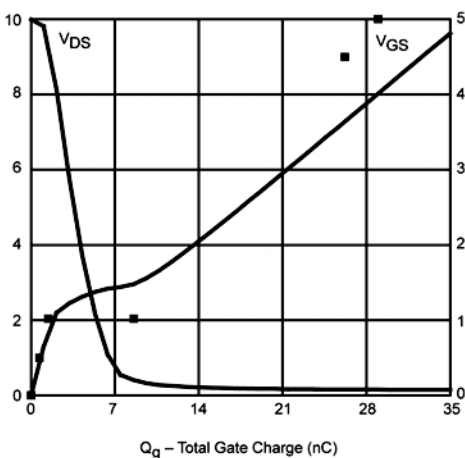
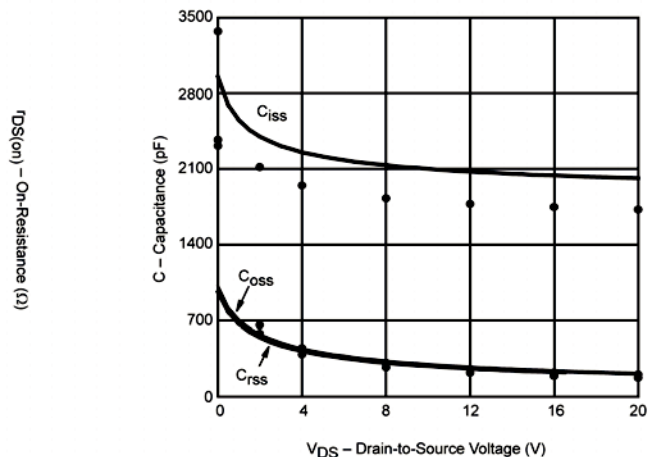
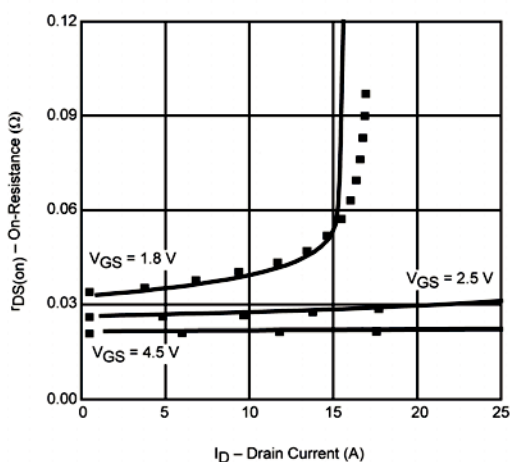
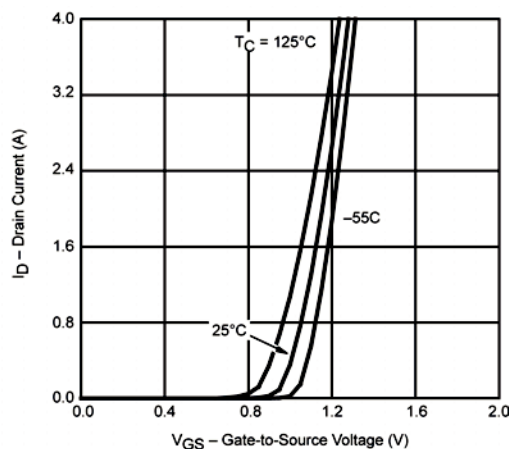
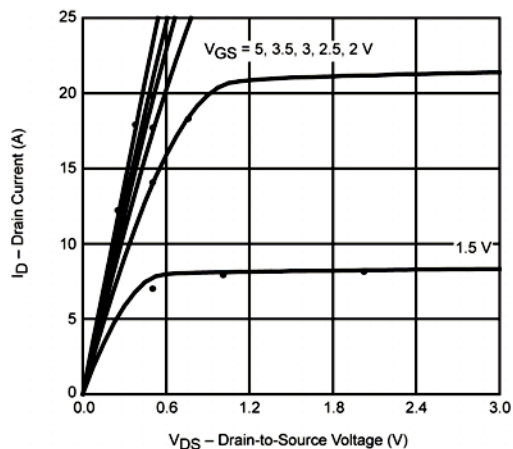
SPECIFICATIONS ( $T_J = 25^\circ\text{C}$ , unless otherwise noted)					
PARAMETER	SYMBOL	TEST CONDITIONS	SIMULATED DATA	MEASURED DATA	UNIT
<b>Static</b>					
Gate-Source Threshold Voltage	$V_{GS(th)}$	$V_{DS} = V_{GS}$ , $I_D = -250\ \mu\text{A}$	0.71	-	V
Drain-Source On-State Resistance <sup>a</sup>	$R_{DS(on)}$	$V_{GS} = -4.5\ \text{V}$ , $I_D = -7\ \text{A}$	0.022	0.023	$\Omega$
		$V_{GS} = -2.5\ \text{V}$ , $I_D = -3.5\ \text{A}$	0.027	0.028	
		$V_{GS} = -1.8\ \text{V}$ , $I_D = -2.2\ \text{A}$	0.034	0.034	
Forward Transconductance <sup>a</sup>	$g_{fs}$	$V_{DS} = -10\ \text{V}$ , $I_D = -7\ \text{A}$	22	24.3	S
Diode Forward Voltage <sup>a</sup>	$V_{SD}$	$I_S = -2.5\ \text{A}$	-0.73	-0.80	V
<b>Dynamic<sup>b</sup></b>					
Input Capacitance	$C_{iss}$	$V_{DS} = -10\ \text{V}$ , $V_{GS} = 0\ \text{V}$ , $f = 1\ \text{MHz}$	2102	1805	pF
Output Capacitance	$C_{oss}$		303	285	
Reverse Transfer Capacitance	$C_{rss}$		285	245	
Total Gate Charge	$Q_g$	$V_{DS} = -10\ \text{V}$ , $V_{GS} = -5\ \text{V}$ , $I_D = -7\ \text{A}$	36	29	nC
		$V_{DS} = -10\ \text{V}$ , $V_{GS} = -4.5\ \text{V}$ , $I_D = -7\ \text{A}$	33	26.2	
Gate-Source Charge	$Q_{gs}$		1.45	1.45	
Gate-Drain Charge	$Q_{gd}$		7.14	7.14	

**Notes**

- a. Pulse test; pulse width  $\leq 300\ \mu\text{s}$ , duty cycle  $\leq 2\ \%$ .  
b. Guaranteed by design, not subject to production testing.



## COMPARISON OF MODEL WITH MEASURED DATA ( $T_J = 25^\circ\text{C}$ , unless otherwise noted)



### Note

- Dots and squares represent measured data.