



## R-C Thermal Model Parameters

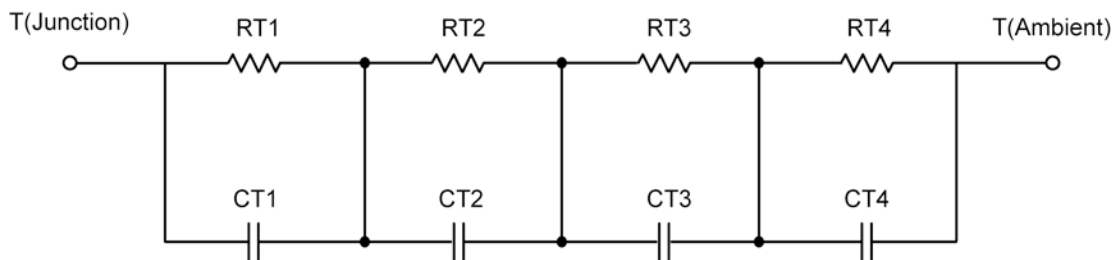
### DESCRIPTION

The parametric values in the R-C thermal model have been derived using curve-fitting techniques. These techniques are described in "[A Simple Method of Generating Thermal Models for a Power MOSFET](#)"[1]. When implemented in P-Spice, these values have matching characteristic curves to the Single Pulse Transient Thermal Impedance curves for the MOSFET.

R-C values for the electrical circuit in the Foster/Tank and Cauer/Filter configurations are included.

*Note:*  
For a detailed explanation of implementing these values in P-Spice, refer to [Application Note AN609 Thermal Simulations Of Power MOSFETs on P-Spice Platform](#).

### R-C THERMAL MODEL FOR TANK CONFIGURATION

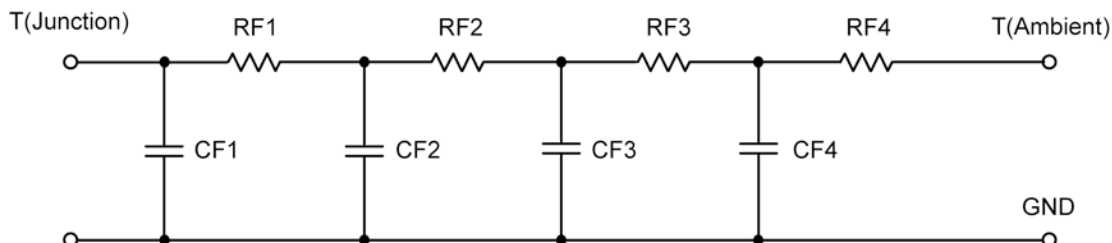


R-C VALUES FOR TANK CONFIGURATION			
Thermal Resistance (°C/W)			
Junction to	Ambient	Case	Foot
RT1	N/A	3.7346 m	N/A
RT2	N/A	84.6590 m	N/A
RT3	N/A	263.6049 m	N/A
RT4	N/A	48.0016 m	N/A
Thermal Capacitance (Joules/°C)			
Junction to	Ambient	Case	Foot
CT1	N/A	41.2844 u	N/A
CT2	N/A	4.2868 m	N/A
CT3	N/A	9.0464 m	N/A
CT4	N/A	795.6369 m	N/A

*This document is intended as a SPICE modeling guideline and does not constitute a commercial product data sheet. Designers should refer to the appropriate data sheet of the same number for guaranteed specification limits.*



**R-C THERMAL MODEL FOR FILTER CONFIGURATION**



<b>R-C VALUES FOR FILTER CONFIGURATION</b>			
Thermal Resistance (°C/W)			
Junction to	Ambient	Case	Foot
RF1	N/A	46.6187 m	N/A
RF2	N/A	120.2784 m	N/A
RF3	N/A	180.9420 m	N/A
RF4	N/A	52.1608 m	N/A
Thermal Capacitance (Joules/°C)			
Junction to	Ambient	Case	Foot
CF1	N/A	1.4900 m	N/A
CF2	N/A	1.9803 m	N/A
CF3	N/A	7.1022 m	N/A
CF4	N/A	412.2964 m	N/A

Note: NA indicates not applicable

Reference:

[1] "A Simple Method of Generating Thermal Models for a Power MOSFET" by Wharton McDaniel and Kandarp Pandya. IEEE / SEMITHERM 2002

