

R-C Thermal Model Parameters

DESCRIPTION

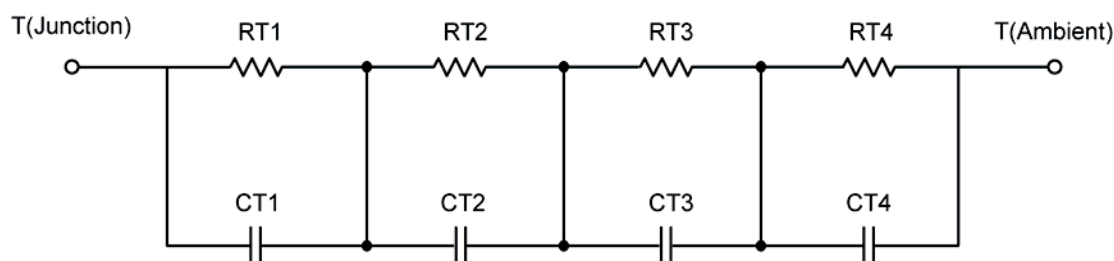
The parametric values in the R-C thermal model have been derived using curve-fitting techniques. These techniques are described in "[A Simple Method of Generating Thermal Models for a Power MOSFET](#)"[1]. When implemented in P-Spice, these values have matching characteristic curves to the Single Pulse Transient Thermal Impedance curves for the MOSFET.

R-C values for the electrical circuit in the Foster/Tank and Cauer/Filter configurations are included.

Note:

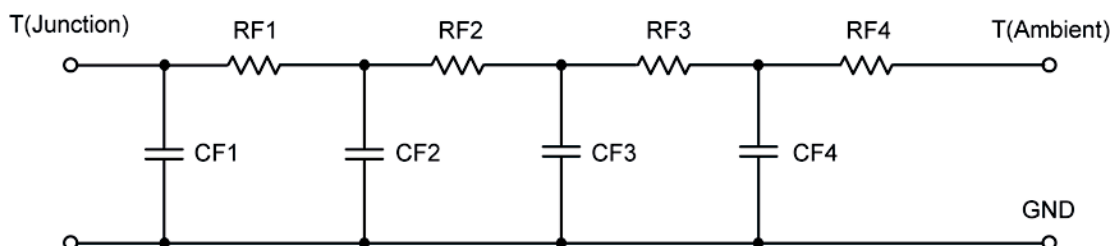
For a detailed explanation of implementing these values in P-SPICE, refer to [Application Note AN609 Thermal Simulations Of Power MOSFETs on P-SPICE Platform](#).

R-C THERMAL MODEL FOR TANK CONFIGURATION



R-C VALUES FOR TANK CONFIGURATION			
Thermal Resistance (°C/W)			
Junction to	Ambient	Case	Foot
RT1	14.2039	N/A	N/A
RT2	41.7977	N/A	N/A
RT3	31.2015	N/A	N/A
RT4	57.7969	N/A	N/A
Thermal Capacitance (Joules/°C)			
Junction to	Ambient	Case	Foot
CT1	122.2679 u	N/A	N/A
CT2	20.4674 m	N/A	N/A
CT3	2.4896 m	N/A	N/A
CT4	1.7993	N/A	N/A

This document is intended as a SPICE modeling guideline and does not constitute a commercial product data sheet. Designers should refer to the appropriate data sheet of the same number for guaranteed specification limits.

R-C THERMAL MODEL FOR FILTER CONFIGURATION**R-C VALUES FOR FILTER CONFIGURATION**

Thermal Resistance ($^{\circ}\text{C}/\text{W}$)			
Junction to	Ambient	Case	Foot
RF1	16.3401	N/A	N/A
RF2	39.4348	N/A	N/A
RF3	32.8835	N/A	N/A
RF4	56.3416	N/A	N/A
Thermal Capacitance (Joules/ $^{\circ}\text{C}$)			
Junction to	Ambient	Case	Foot
CF1	119.9532 μ	N/A	N/A
CF2	2.3373 m	N/A	N/A
CF3	25.1100 m	N/A	N/A
CF4	1.8335	N/A	N/A

Note: NA indicates not applicable

Reference:

[1] "A Simple Method of Generating Thermal Models for a Power MOSFET" by Wharton McDaniel and Kandarp Pandya. IEEE / SEMITHERM 2002

