



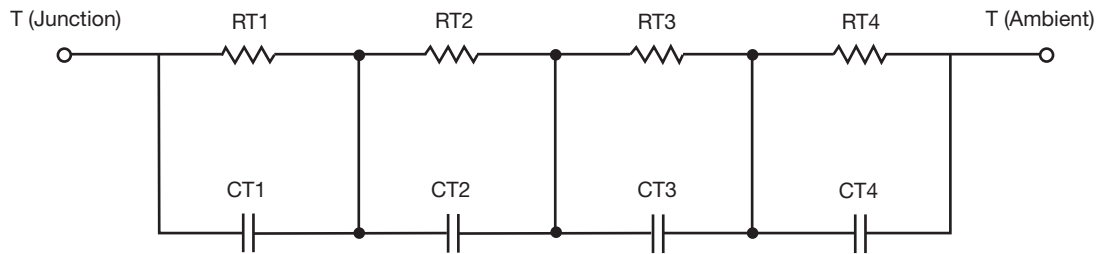
# R-C Thermal Model Parameters

## DESCRIPTION

The parametric values in the R-C thermal model have been derived using curve-fitting techniques. R-C values for the electrical circuit in the Foster/tank and Cauer/filter configurations are included. When implemented in PSpice, these values have matching characteristic curves to the single-pulse transient thermal impedance curves for the MOSFET.

These RC values can be used in the PSpice simulation to evaluate the thermal behavior of the MOSFET junction temperature under a defined power profile. These techniques are described in application note AN609, "Thermal Simulation of Power MOSFETs on the PSpice Platform".

## R-C THERMAL MODEL FOR TANK CONFIGURATION



R-C VALUES FOR TANK CONFIGURATION			
THERMAL RESISTANCE (°C/W)			
Junction to	Ambient	Case	Foot
RT1	36.1780	242.0245m	n/a
RT2	9.0028	248.0562m	n/a
RT3	17.3715	865.9275m	n/a
RT4	5.2368	844.5395m	n/a
THERMAL CAPACITANCE (Joules/°C)			
Junction to	Ambient	Case	Foot
CT1	3.3291	2.8780m	n/a
CT2	165.3292m	17.6708m	n/a
CT3	895.9953m	48.0893m	n/a
CT4	16.7998m	50.1544m	n/a

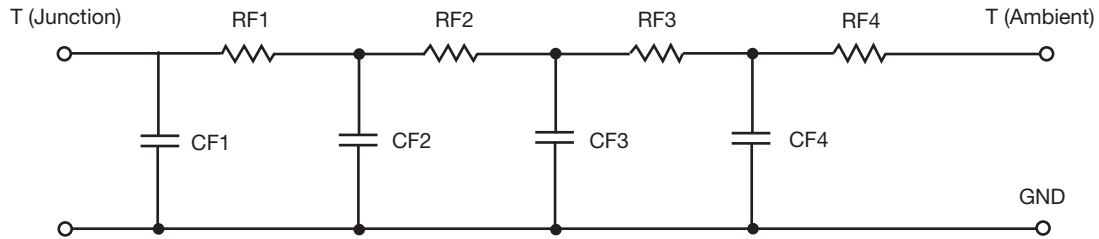
### Note

- n/a indicates not applicable

This document is intended as a SPICE modeling guideline and does not constitute a commercial product datasheet. Designers should refer to the appropriate datasheet of the same number for guaranteed specification limits.



R-C THERMAL MODEL FOR FILTER CONFIGURATION



R-C VALUES FOR FILTER CONFIGURATION			
THERMAL RESISTANCE (°C/W)			
Junction to	Ambient	Case	Foot
RF1	5.6770	462.2369m	n/a
RF2	10.9579	525.9140m	n/a
RF3	23.4707	321.9292m	n/a
RF4	27.8154	890.4806m	n/a
THERMAL CAPACITANCE (Joules/°C)			
Junction to	Ambient	Case	Foot
CF1	13.4929m	2.6175m	n/a
CF2	97.1894m	13.0942m	n/a
CF3	574.5237m	4.2330m	n/a
CF4	3.5528	18.0650m	n/a

Note

- n/a indicates not applicable

