

P-Channel 40 V (D-S) MOSFET

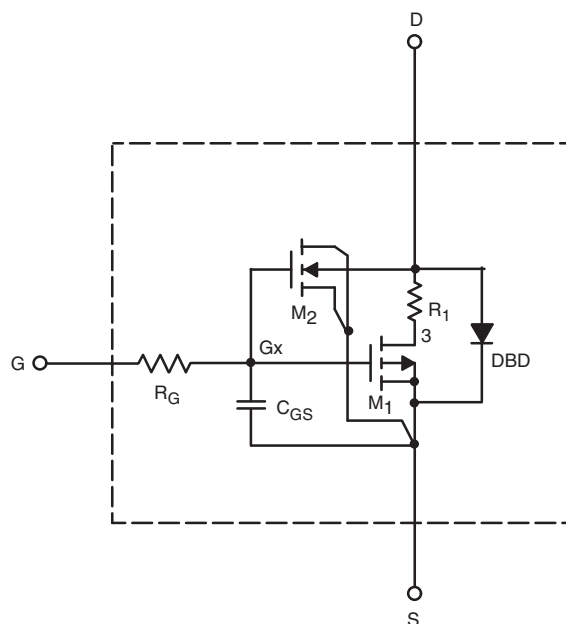
DESCRIPTION

The attached SPICE model describes the typical electrical characteristics of the p-channel vertical DMOS. The subcircuit model is extracted and optimized over the - 55 °C to + 125 °C temperature ranges under the pulsed 0 V to 10 V gate drive. The saturated output impedance is best fit at the gate bias near the threshold voltage. A novel gate-to-drain feedback capacitance network is used to model the gate charge characteristics while avoiding convergence difficulties of the switched C_{gd} model. All model parameter values are optimized to provide a best fit to the measured electrical data and are not intended as an exact physical interpretation of the device.

CHARACTERISTICS

- P-Channel Vertical DMOS
- Macro Model (Subcircuit Model)
- Level 3 MOS
- Apply for both Linear and Switching Application
- Accurate over the - 55 °C to + 125 °C Temperature Range
- Model the Gate Charge

SUBCIRCUIT MODEL SCHEMATIC



Note

- This document is intended as a SPICE modeling guideline and does not constitute a commercial product datasheet. Designers should refer to the appropriate datasheet of the same number for guaranteed specification limits.



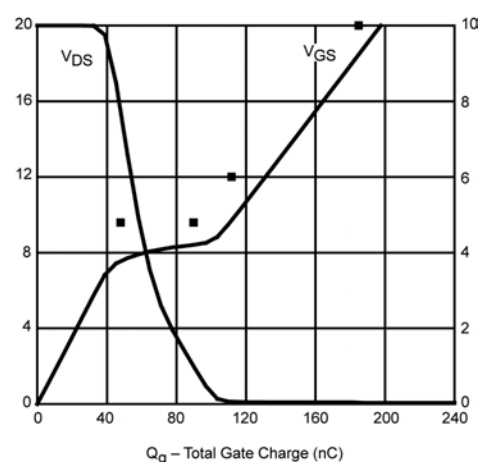
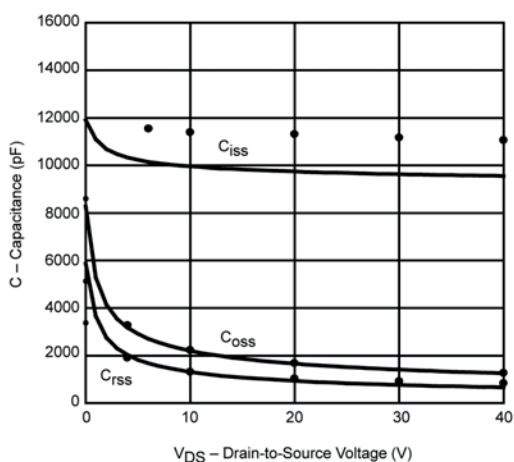
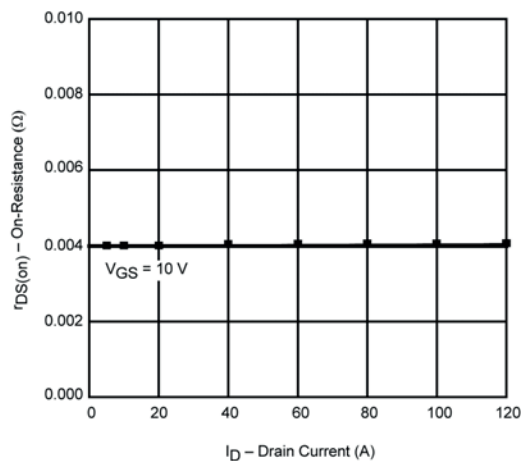
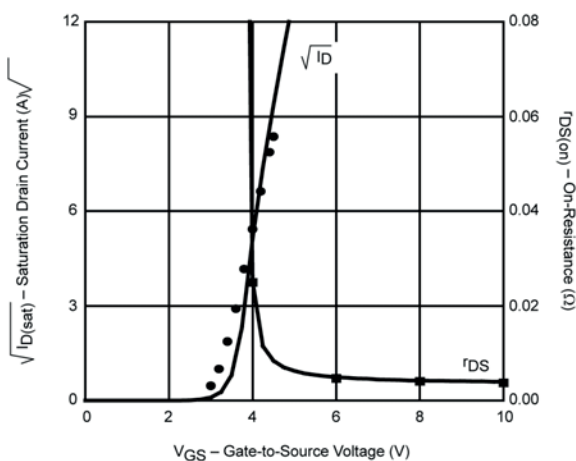
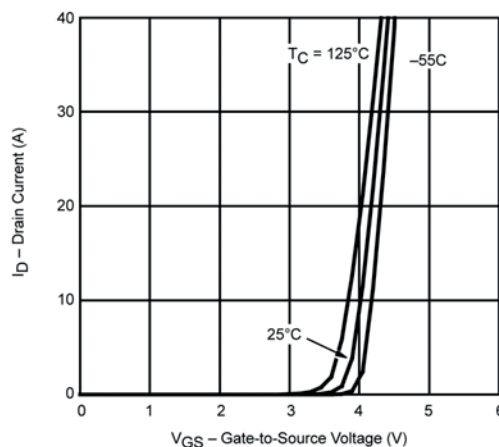
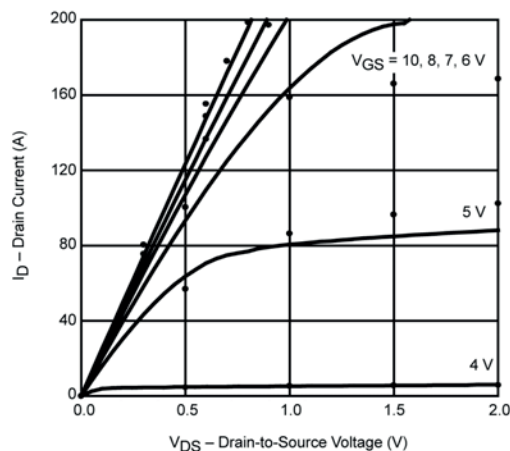
SPECIFICATIONS ($T_J = 25\text{ }^{\circ}\text{C}$, unless otherwise noted)					
PARAMETER	SYMBOL	TEST CONDITIONS	SIMULATED DATA	MEASURED DATA	UNIT
Static					
Gate-Source Threshold Voltage	$V_{GS(th)}$	$V_{DS} = V_{GS}$, $I_D = -250\text{ }\mu\text{A}$	2.8	-	V
On-State Drain Current ^a	$I_{D(on)}$	$V_{DS} \geq -5\text{ V}$, $V_{GS} = -10\text{ V}$	982	-	A
Drain-Source On-State Resistance ^a	$R_{DS(on)}$	$V_{GS} = -10\text{ V}$, $I_D = -20\text{ A}$	0.0040	0.0041	Ω
Forward Transconductance ^a	g_{fs}	$V_{DS} = -15\text{ V}$, $I_D = -20\text{ A}$	126	75	S
Diode Forward Voltage ^a	V_{SD}	$I_S = -20\text{ A}$	-0.88	-0.80	V
Dynamic^b					
Input Capacitance	C_{iss}	$V_{DS} = -25\text{ V}$, $V_{GS} = 0\text{ V}$, $f = 1\text{ MHz}$	9687	11 300	pF
Output Capacitance	C_{oss}		1524	1510	
Reverse Transfer Capacitance	C_{rss}		844	1000	
Total Gate Charge ^c	Q_g	$V_{DS} = -20\text{ V}$, $V_{GS} = -10\text{ V}$, $I_D = -20\text{ A}$	195	185	nC
Gate-Source Charge ^c	Q_{gs}		48	48	
Gate-Drain Charge ^c	Q_{gd}		42	42	

Notes

- a. Pulse test; pulse width $\leq 300\text{ }\mu\text{s}$, duty cycle $\leq 2\%$.
b. Guaranteed by design, not subject to production testing.
c. Independent of operating temperature.



COMPARISON OF MODEL WITH MEASURED DATA ($T_J = 25^\circ\text{C}$, unless otherwise noted)



Note

- Dots and squares represent measured data.