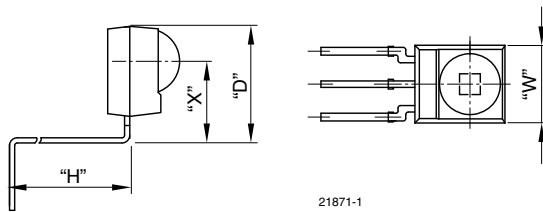
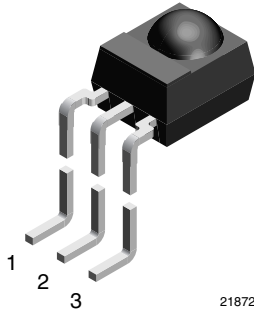


Bent Leads:
D = 9 mm, H = 17.05 mm, W = 6 mm, X = 6.3 mm

AVAILABLE FOR

- Mold



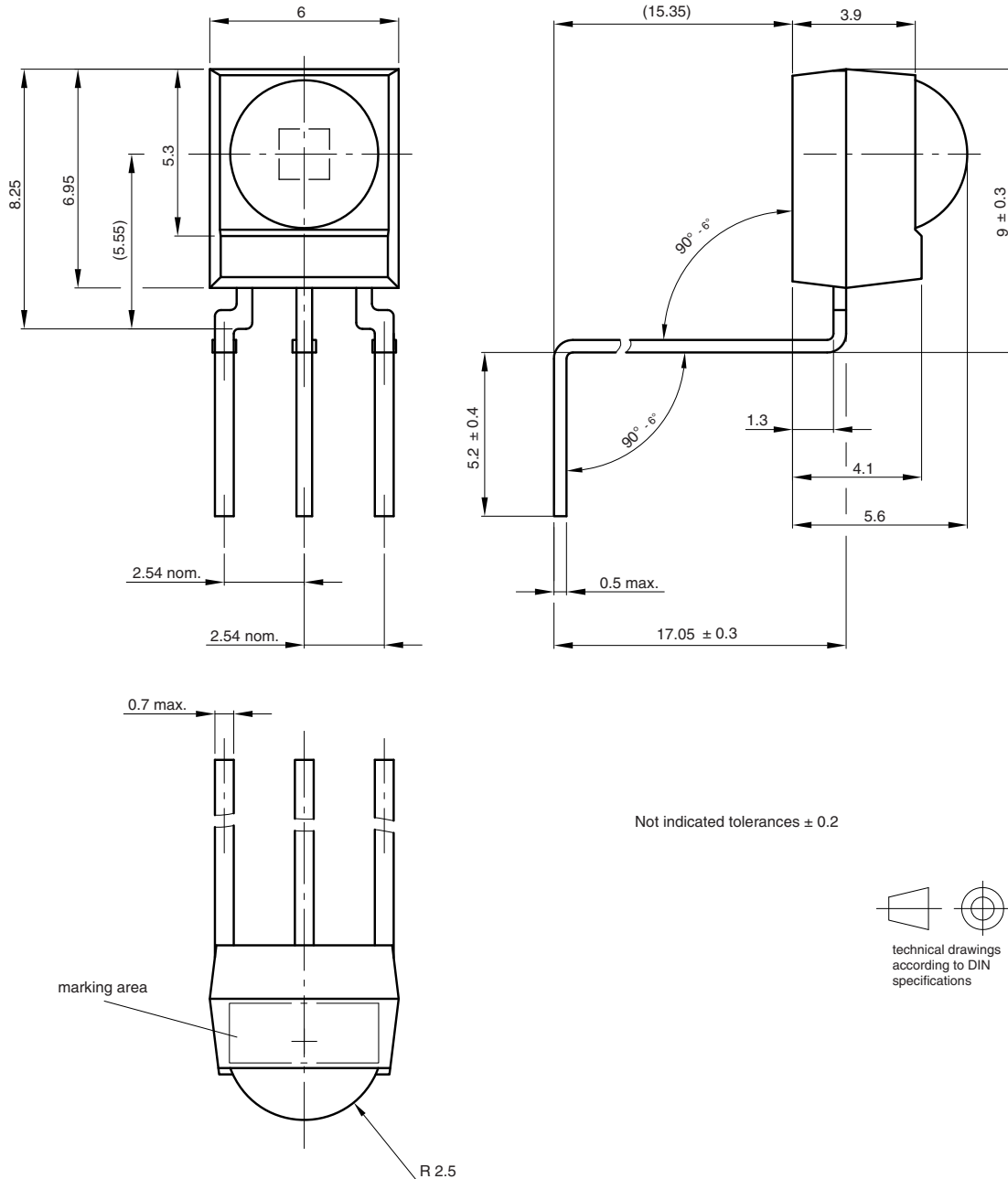
LINKS TO ADDITIONAL RESOURCES



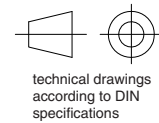
NAME	LENS AXIS (X)	VIEW	TYPE	HEIGHT (H)	WIDTH (W)	DEPTH (D)
DE1	6.3	-	Bend	17.05	6	9



MECHANICAL DIMENSIONS in millimeters

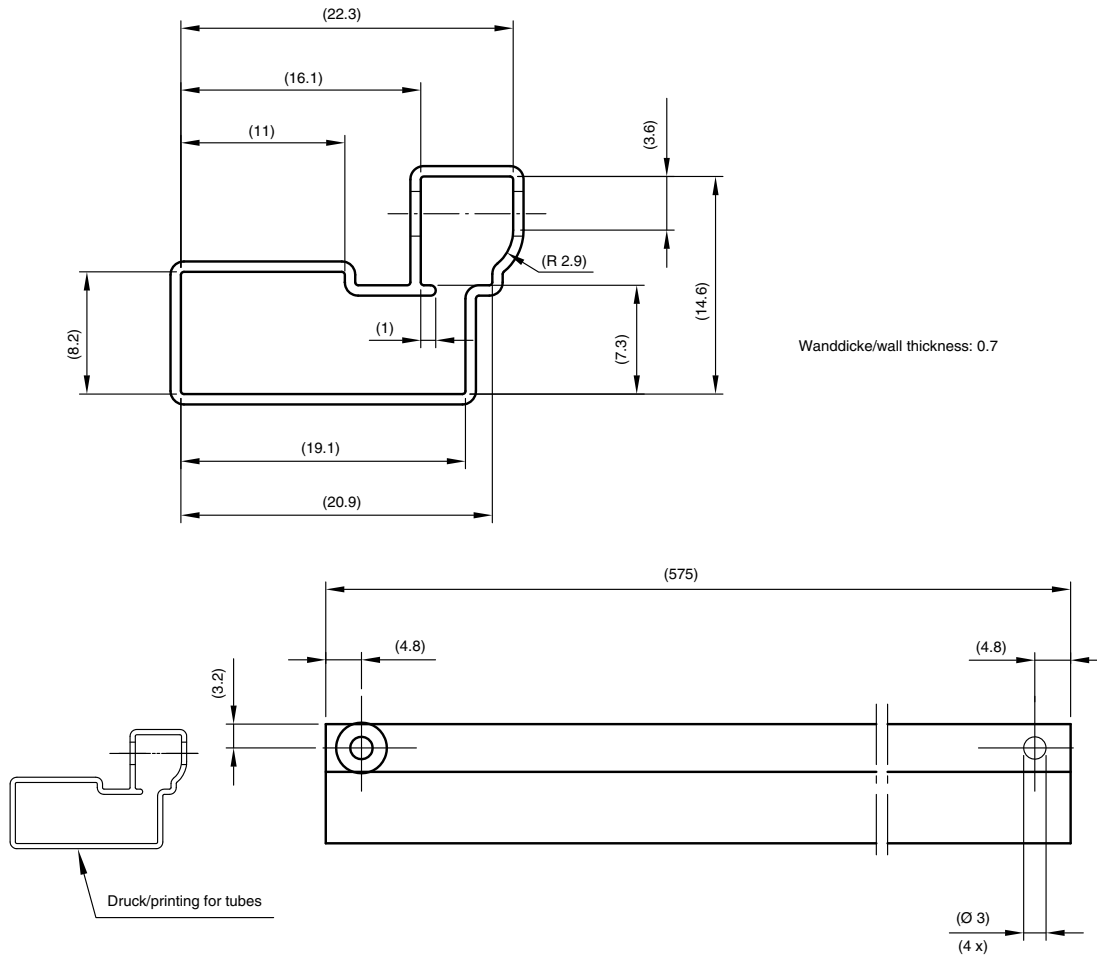


Not indicated tolerances ± 0.2



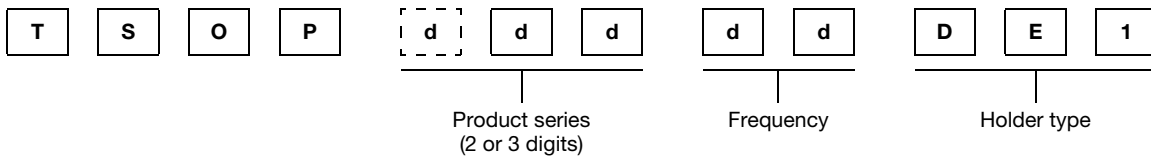
Drawing-No.: 6.550-5304.01-4
Issue: 1; 24.08.09
21870

PACKAGING DIMENSIONS in millimeters



Drawing-no.: 9.700-5344.0-4
 Issue: 1; 14.09.09
 21869

ORDERING INFORMATION



Note

- d = “digit”, please consult the list of available series on the previous page to create a valid part number

Example: TSOP14638DE1

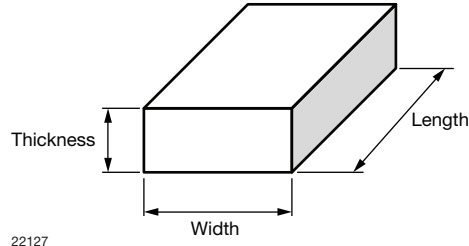
PACKAGING QUANTITY

- 90 pieces per tube
- 30 tubes per carton



OUTER PACKAGING

CARTON BOX DIMENSIONS in millimeters



KINDS OF CARTON BOX	THICKNESS	WIDTH	LENGTH
Packaging plastic tubes (normal / auxiliary devices)	80	150	600
Packaging plastic trays (devices with metal holders)	120	290	490
Tape and reel box (taping in reels)	400	310	410
Ammo-box (zigzag taping)	50	130	350