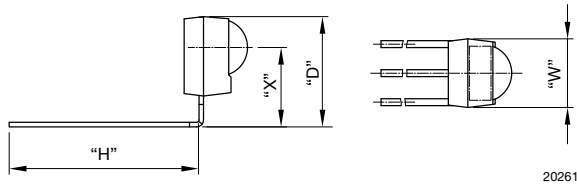
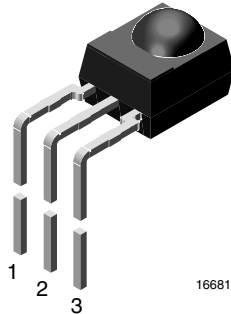


Bent Leads:
D = 12.6 mm, H = 6.6 mm, W = 6 mm, X = 9.9 mm

AVAILABLE FOR

- Mold



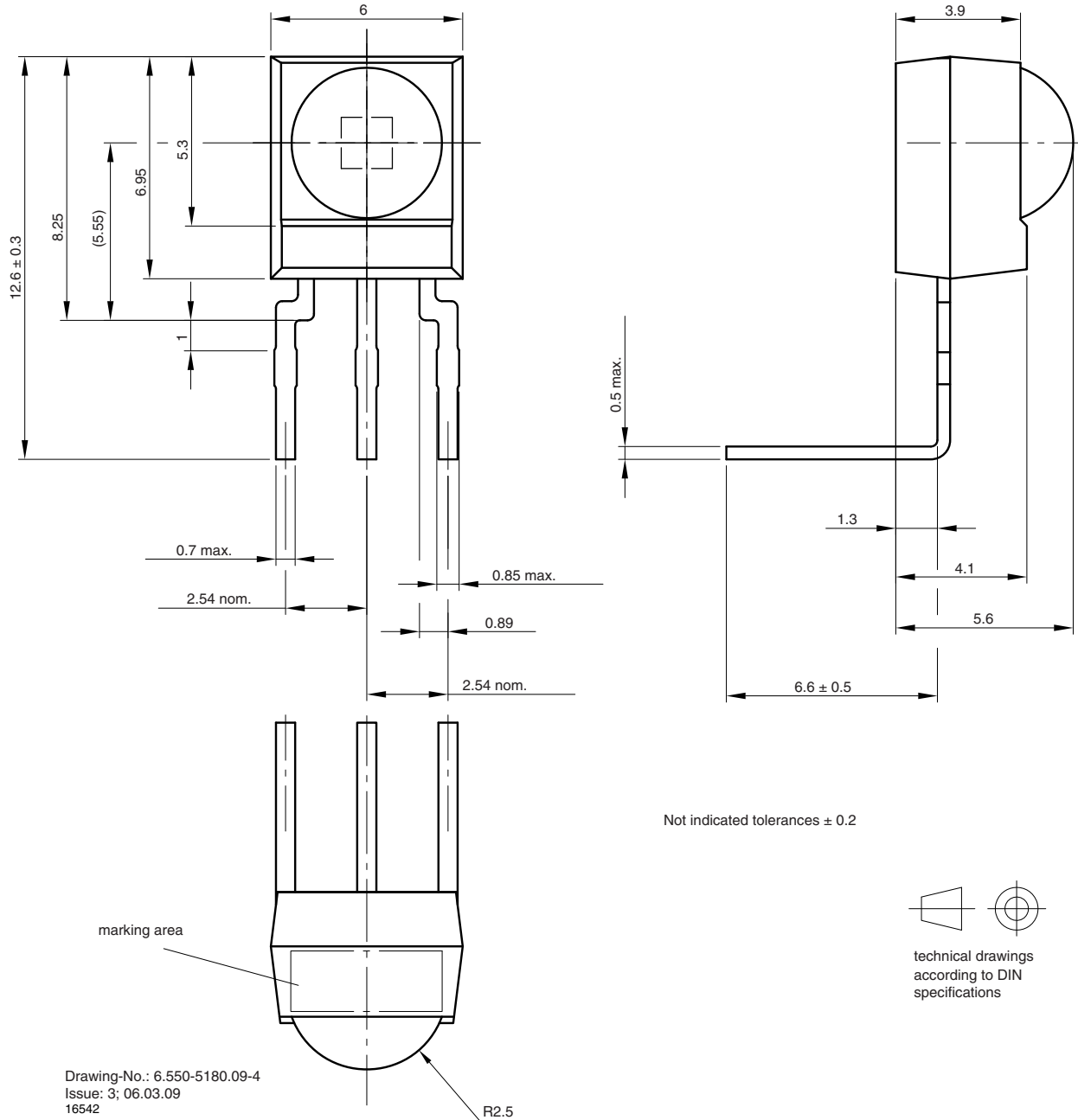
LINKS TO ADDITIONAL RESOURCES



NAME	LENS AXIS (X)	VIEW	TYPE	HEIGHT (H)	WIDTH (W)	DEPTH (D)
SL1	9.9	-	Bend	6.6	6	12.6

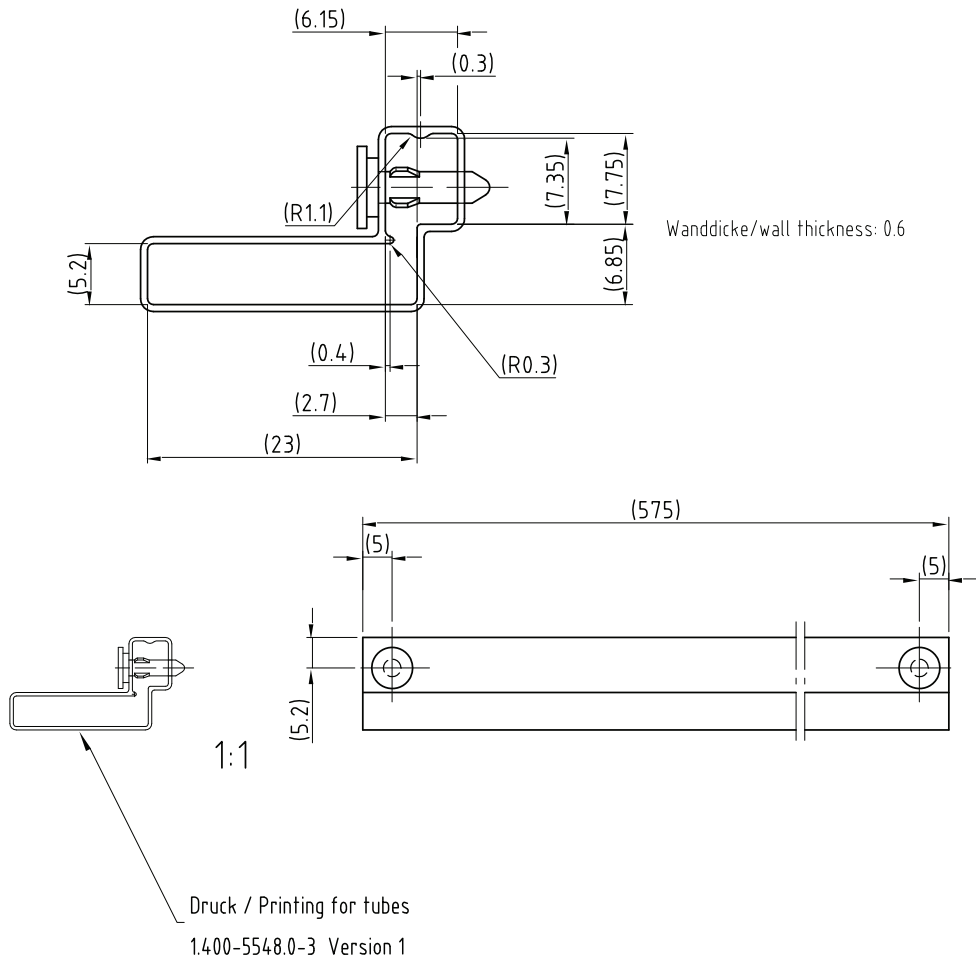


MECHANICAL DIMENSIONS in millimeters



Drawing-No.: 6.550-5180.09-4
Issue: 3; 06.03.09
16542

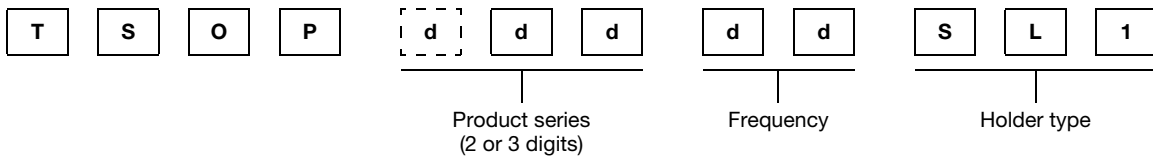
PACKAGING DIMENSIONS in millimeters



Drawing-No.: 9.700-5213.0-4
Rev. 6; Date: 20.11.03

20262-1

ORDERING INFORMATION



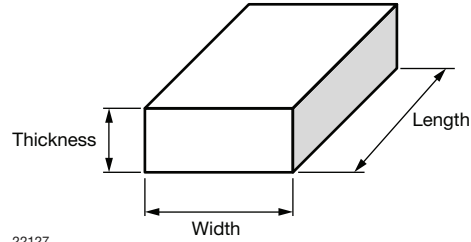
Note

- d = "digit", please consult the list of available series on the previous page to create a valid part number

Example: TSOP14638SL1

PACKAGING QUANTITY

- 90 pieces per tube
- 24 tubes per carton

OUTER PACKAGING
CARTON BOX DIMENSIONS in millimeters


KINDS OF CARTON BOX	THICKNESS	WIDTH	LENGTH
Packaging plastic tubes (normal / auxiliary devices)	80	150	600
Packaging plastic trays (devices with metal holders)	120	290	490
Tape and reel box (taping in reels)	400	310	410
Ammo-box (zigzag taping)	50	130	350