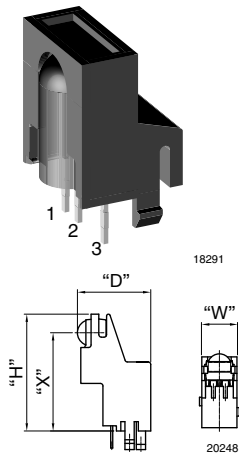


## Side View Holder:

**D = 11.25 mm, H = 13.8 mm, W = 11.5 mm, X = 9.75 mm**


**FEATURES**

- Material categorization: for definitions of compliance please see [www.vishay.com/doc?99912](http://www.vishay.com/doc?99912)

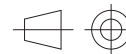
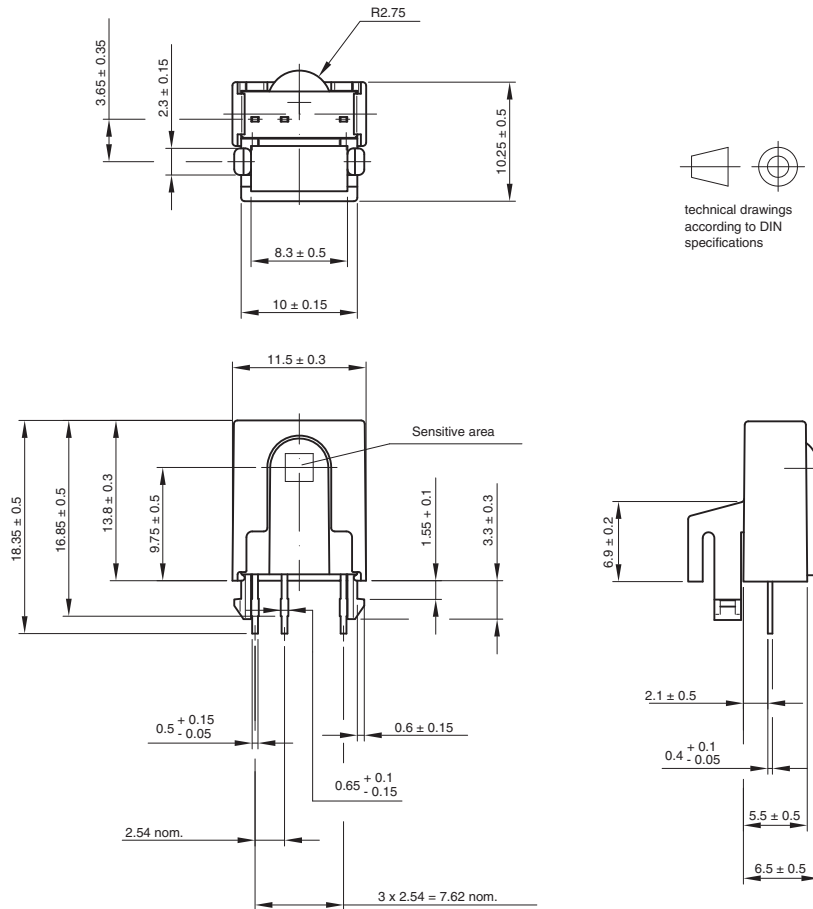


**RoHS**  
COMPLIANT  
HALOGEN  
**FREE**  
**GREEN**  
(5-2008)

**AVAILABLE FOR**

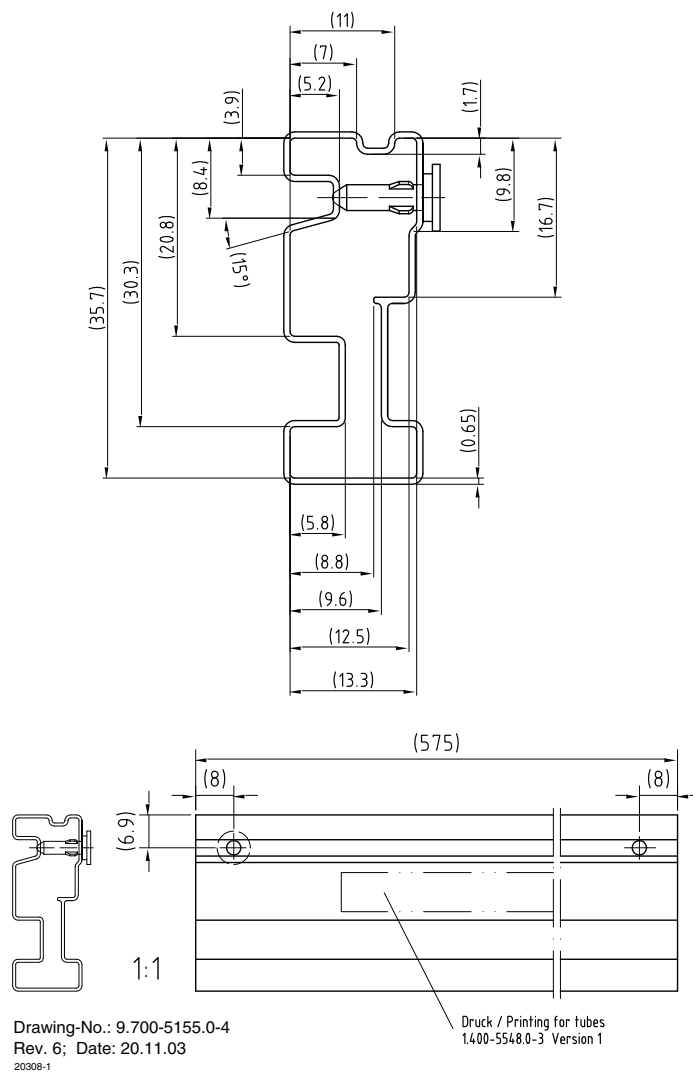
- Cast.

NAME	LENS AXIS (X)	VIEW	TYPE	HEIGHT (H)	WIDTH (W)	DEPTH (D)
KD1	9.75	Side	Holder	13.8	11.5	11.25

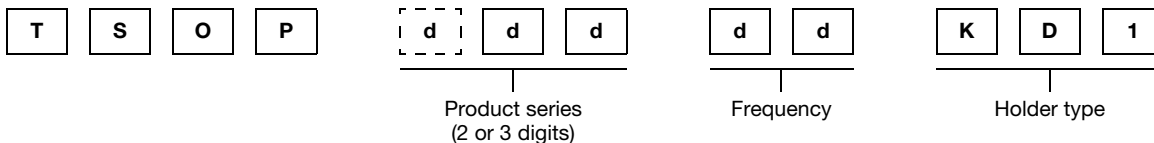
**MECHANICAL DIMENSIONS** in millimeters

 technical drawings  
according to DIN  
specifications

 Drawing-No.: 6.550-5098.02-4  
Issue: 5; 04.08.09  
20369

**PACKAGING DIMENSIONS** in millimeters



**ORDERING INFORMATION**



**Note**

- d = "digit", please consult the list of available series on the previous page to create a valid part number

**Example: TSOP31238KD1**

**PACKING QUANTITY**

- 48 pieces per tube
- 18 tubes per carton

Vishay offers plastic and metal holder which have different characteristics:

- Plastic Pros: nearly invisible behind the bezel
- Plastic Cons: cannot be reflow soldered, wave soldering deforms the hooks (visual issue only, the part is secured by the leads after soldering)
- Metal Pros: may be reflow and wave soldered, improves EMI and RF rejection
- Metal Cons: appears shiny behind the bezel, will oxidize over time (visual issue only, the holder functionality is not impaired)