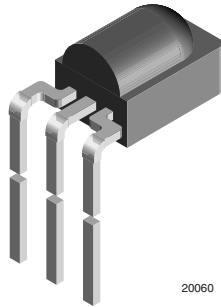


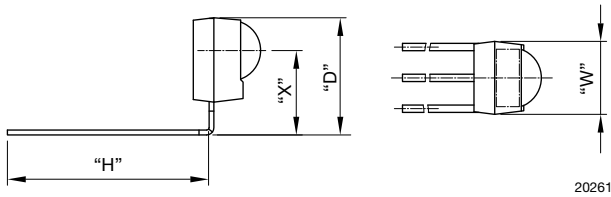
Bent Leads:
D = 9.65 mm, H = 20.8 mm, W = 5 mm, X = 6.95 mm



20060

AVAILABLE FOR

- Minicast



20261

LINKS TO ADDITIONAL RESOURCES

[Product Page](#)

[3D Models](#)

[Calculators](#)

[Marking](#)

[Packages](#)

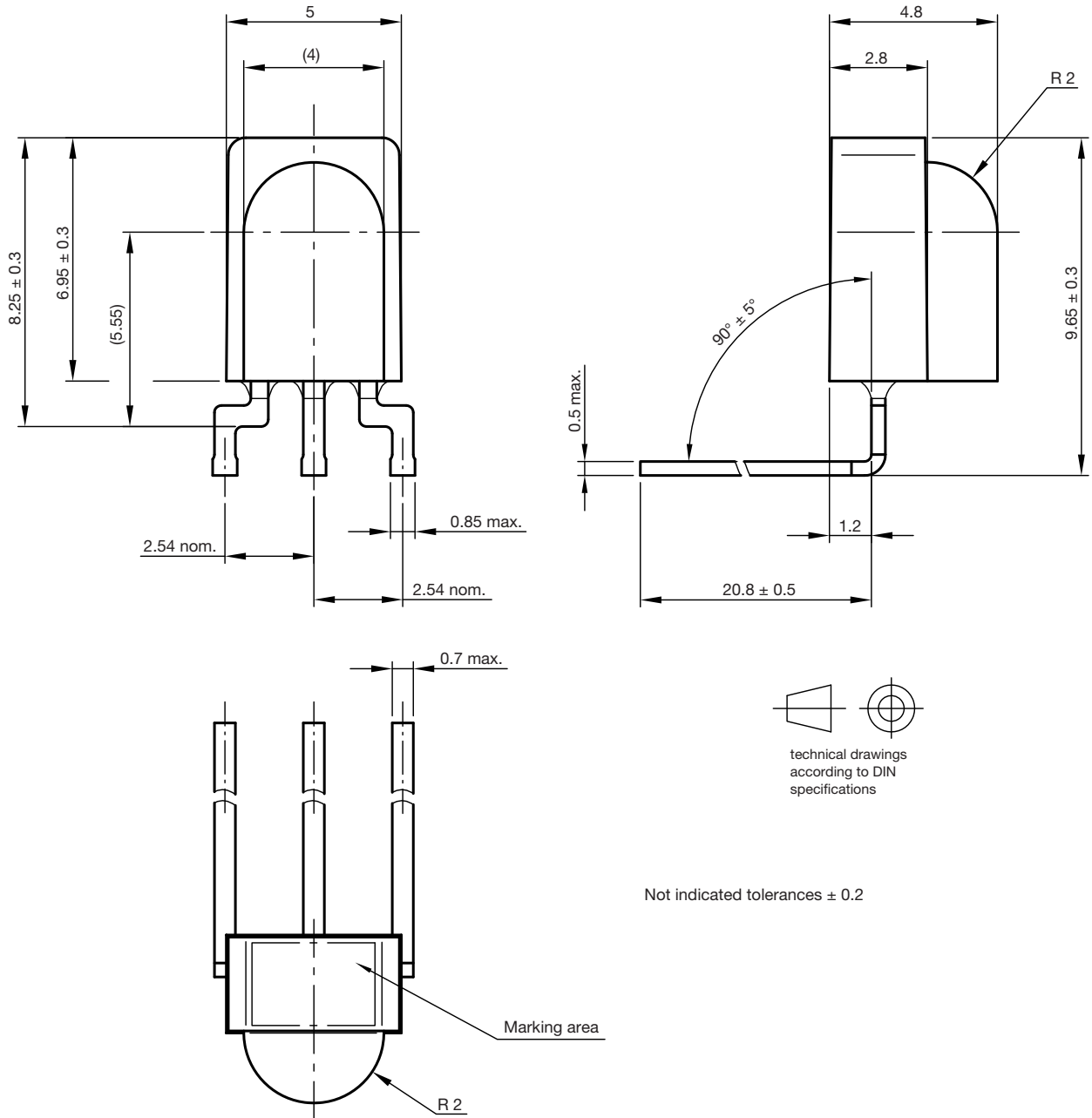
[Holders](#)

[Bends and Cuts](#)

NAME	LENS AXIS (X)	VIEW	TYPE	HEIGHT (H)	WIDTH (W)	DEPTH (D)
SB1	6.95	-	Bend	20.8	5	9.65



MECHANICAL DIMENSIONS in millimeters

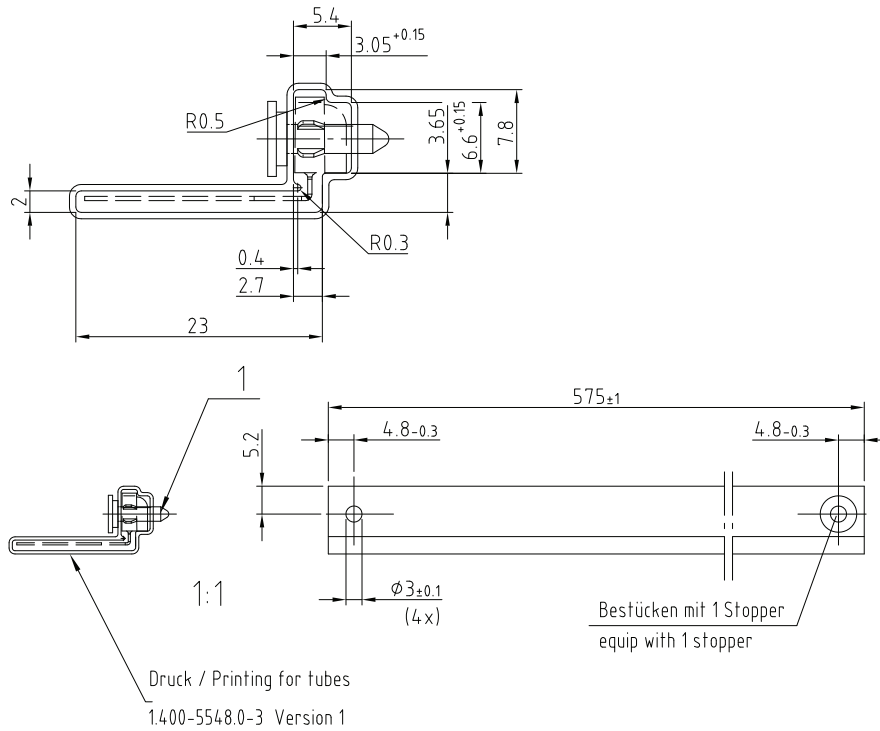


technical drawings according to DIN specifications

Not indicated tolerances ± 0.2

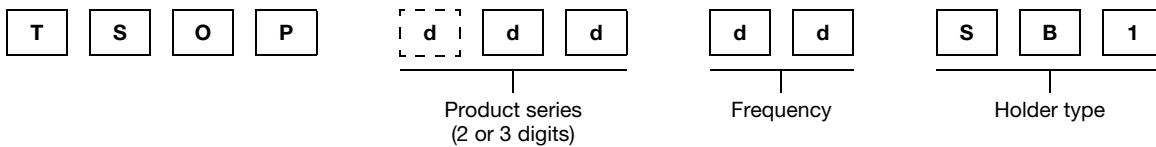
Drawing-No.: 6.550-5281.01-4
 Issue: 3; 12.03.10
 20061

PACKAGING DIMENSIONS in millimeters



Drawing-No.: 9.700-5309.0-4
Rev. 2; Date: 26.10.07
20440

ORDERING INFORMATION



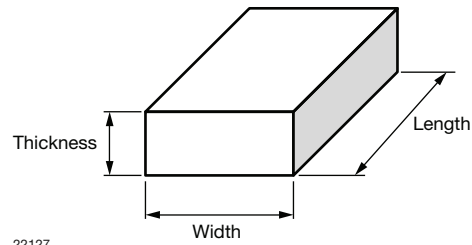
Note

- d = "digit", please consult the list of available series on the previous page to create a valid part number

Example: TSOP39238SB1

PACKING QUANTITY

- 105 pieces per tube
- 30 tubes per carton

OUTER PACKAGING
CARTON BOX DIMENSIONS in millimeters


KINDS OF CARTON BOX	THICKNESS	WIDTH	LENGTH
Packaging plastic tubes (normal / auxiliary devices)	80	150	600
Packaging plastic trays (devices with metal holders)	120	290	490
Big box (bulk packaging)	150	180	400
Secondary box (taping in reels)	400	310	410
Ammo-box (zigzag taping)	50	130	350