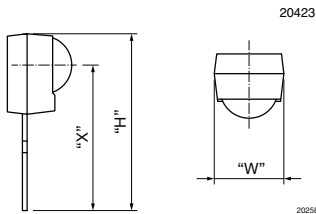
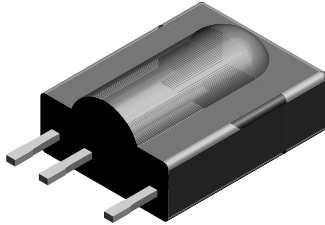


Cut Leads:

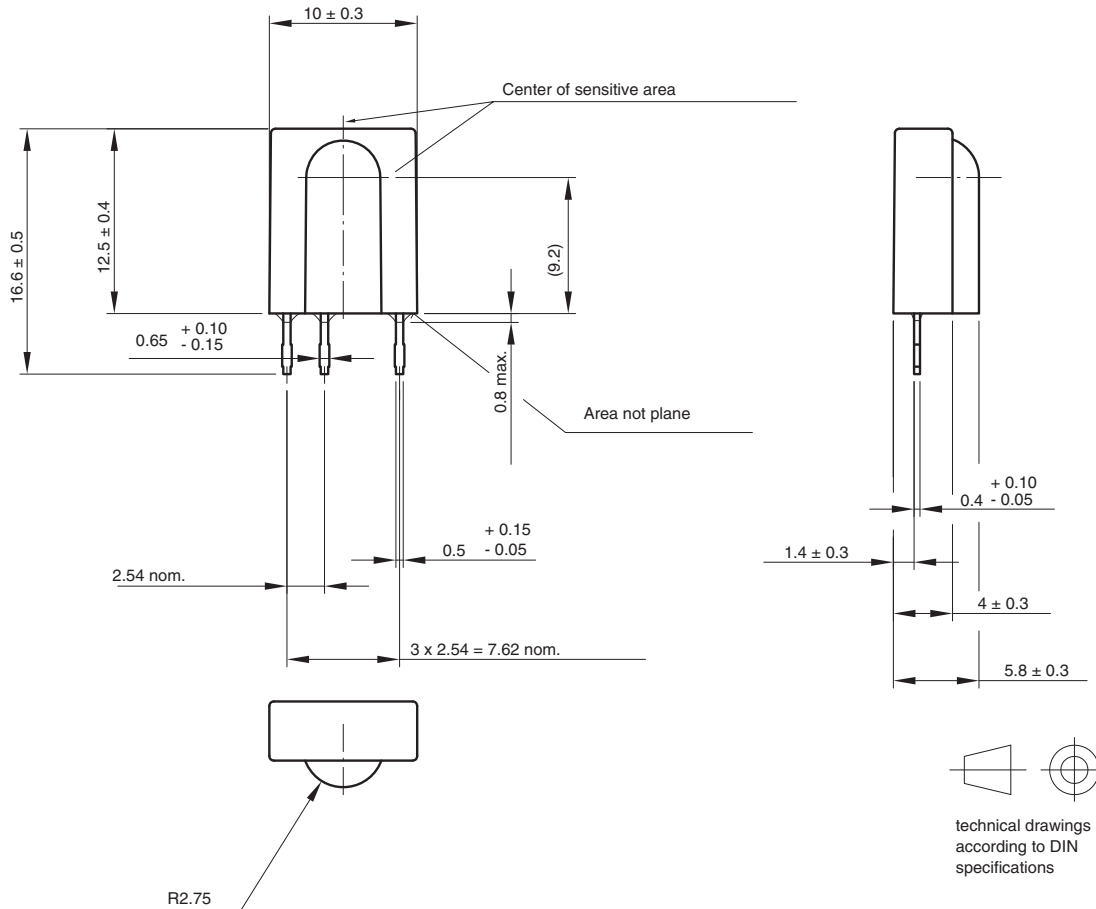
H = 16.6 mm, W = 10 mm, X = 13.3 mm

AVAILABLE FOR

- Cast

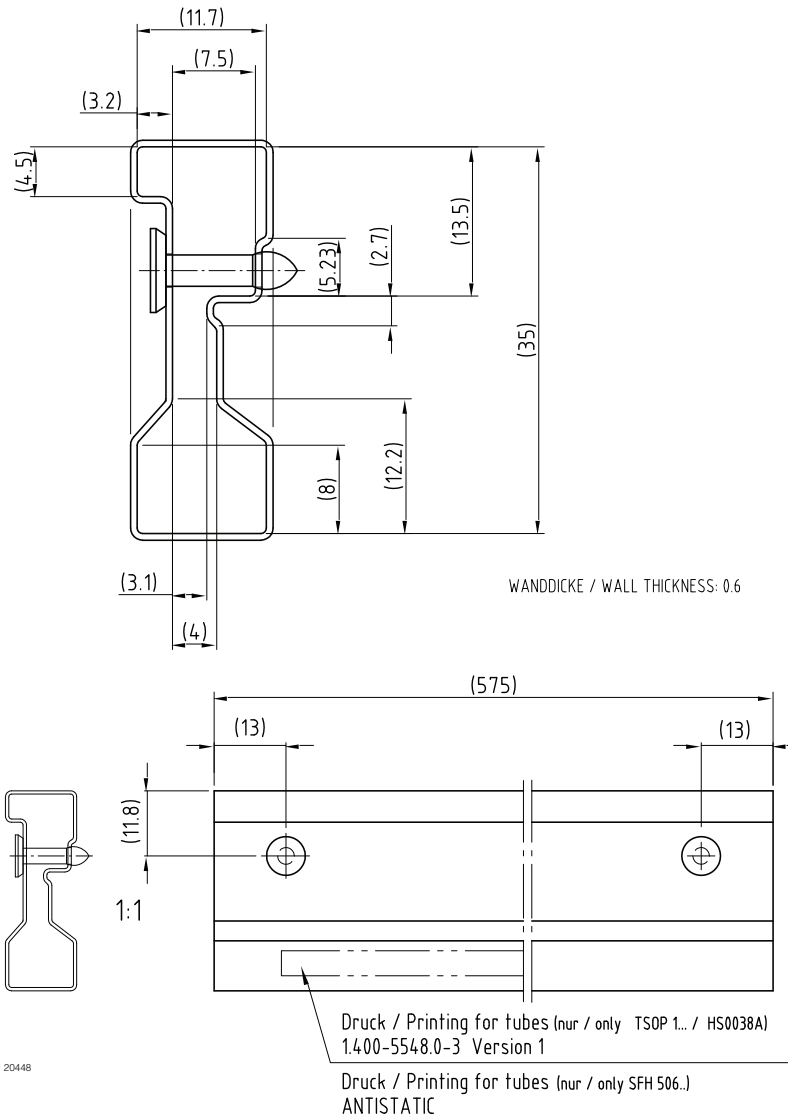


NAME	LENS AXIS (X)	VIEW	TYPE	HEIGHT (H)	WIDTH (W)	DEPTH (D)
SA1	13.3	-	Cut	16.6	10	-

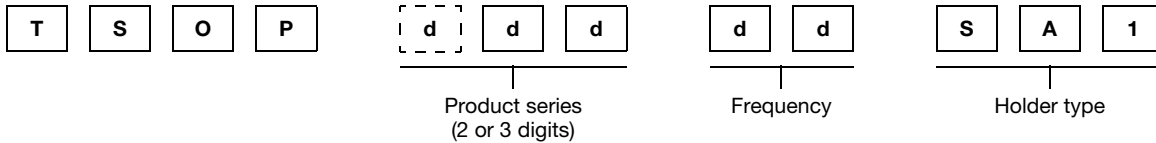
MECHANICAL DIMENSIONS in millimeters


Drawing-No.: 6.550-5095.04-4
 Issue: 11; 04.08.09
 20449

PACKAGING DIMENSIONS in millimeters



ORDERING INFORMATION



Note

- d = "digit", please consult the list of available series on the previous page to create a valid part number

Example: TSOP31238SA1

PACKING QUANTITY

- 54 pieces per tube
- 20 tubes per carton