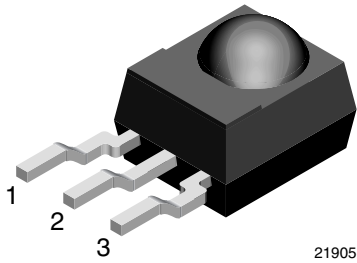


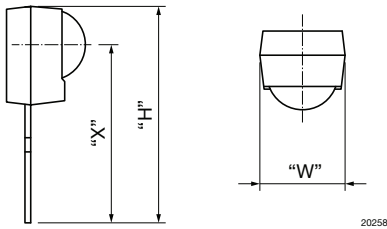
**Bent Leads:**  
**H = 12.0 mm, W = 6 mm, X = 9.3 mm**



21905

**AVAILABLE FOR**

- Mold



20258

**LINKS TO ADDITIONAL RESOURCES**

[Product Page](#)

[3D Models](#)

[Calculators](#)

[Marking](#)

[Packages](#)

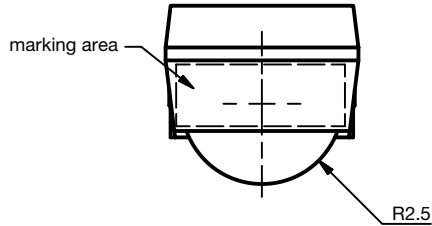
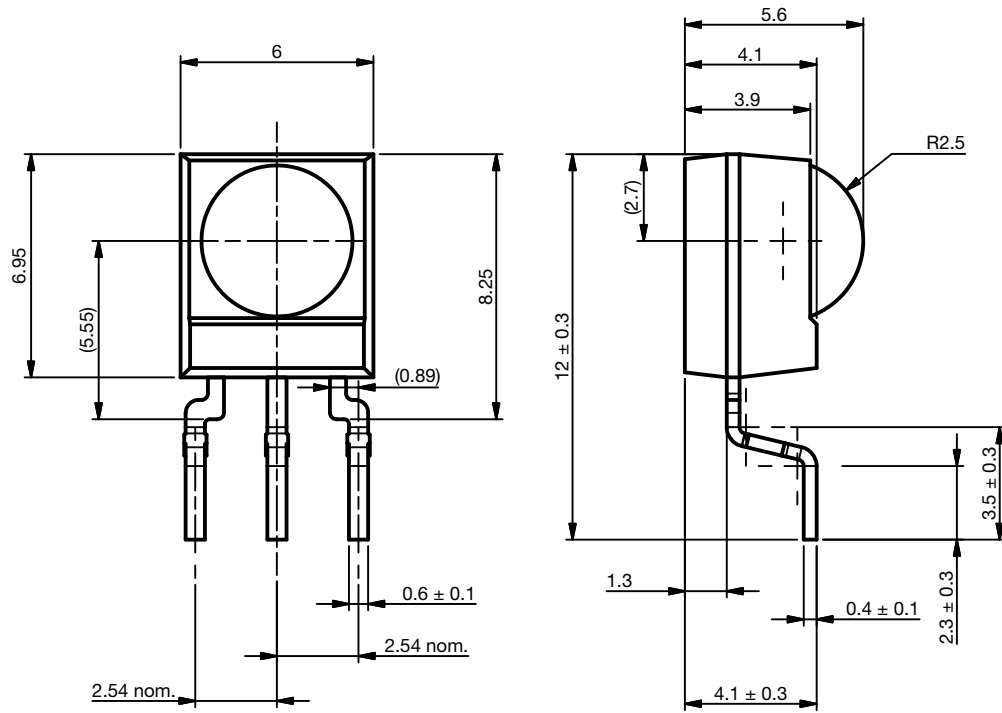
[Holders](#)

[Bends and Cuts](#)

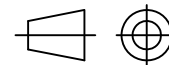
NAME	LENS AXIS (X)	VIEW	TYPE	HEIGHT (H)	WIDTH (W)	DEPTH (D)
DL1	9.3	Bottom	Bend	12.0	6	-



**MECHANICAL DIMENSIONS** in millimeters



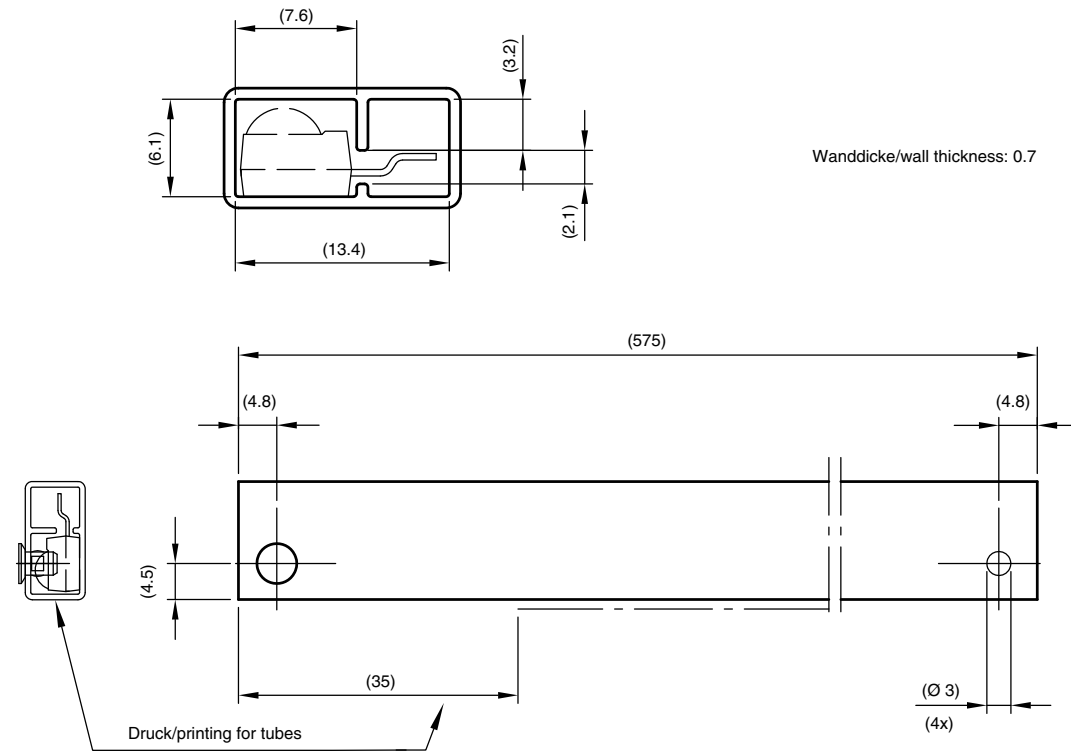
Not indicated tolerances ± 0.2



Technical drawings according to DIN specification.

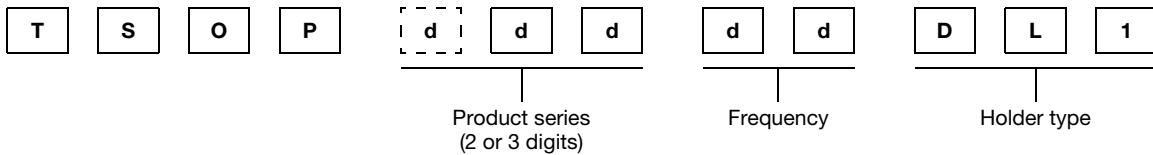
Drawing-No.: 6.550-5336.01-4  
Issue: 1; 06.03.15

**PACKAGING DIMENSIONS** in millimeters



Drawing-No.: 9.700-5345.0-4  
 Issue: 1; 29.09.09  
 21903

**ORDERING INFORMATION**



**Note**

- d = "digit", please consult the list of available series on the previous page to create a valid part number

**Example: TSOP32538DL1**

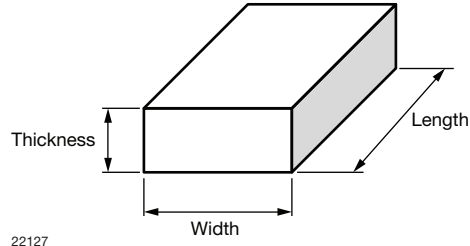
**PACKING QUANTITY**

- 90 pieces per tube
- 63 tubes per carton



OUTER PACKAGING

**CARTON BOX DIMENSIONS** in millimeters



KINDS OF CARTON BOX	THICKNESS	WIDTH	LENGTH
Packaging plastic tubes (normal / auxiliary devices)	80	150	600
Packaging plastic trays (devices with metal holders)	120	290	490
Tape and reel box (taping in reels)	400	310	410
Ammo-box (zigzag taping)	50	130	350