



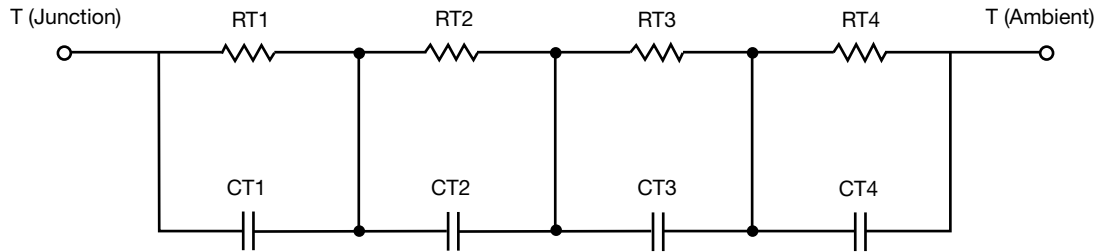
R-C Thermal Model Parameters

DESCRIPTION

The parametric values in the R-C thermal model have been derived using curve-fitting techniques. R-C values for the electrical circuit in the Foster/tank and Cauer/filter configurations are included. When implemented in P-SPICE, these values have matching characteristic curves to the single-pulse transient thermal impedance curves for the MOSFET.

These RC values can be used in the P-SPICE simulation to evaluate the thermal behavior of the MOSFET junction temperature under a defined power profile. These techniques are described in application note AN609, "Thermal Simulation of Power MOSFETs on the P-SPICE Platform".

R-C THERMAL MODEL FOR TANK CONFIGURATION



R-C VALUES FOR TANK CONFIGURATION			
THERMAL RESISTANCE (°C/W)			
Junction to	Ambient	Case	Foot
RT1	N/A	106.9664m	N/A
RT2	N/A	156.3672m	N/A
RT3	N/A	79.9820m	N/A
RT4	N/A	157.4914m	N/A
THERMAL CAPACITANCE (Joules/°C)			
Junction to	Ambient	Case	Foot
CT1	N/A	69.7249m	N/A
CT2	N/A	177.0388m	N/A
CT3	N/A	20.1484m	N/A
CT4	N/A	174.1224m	N/A

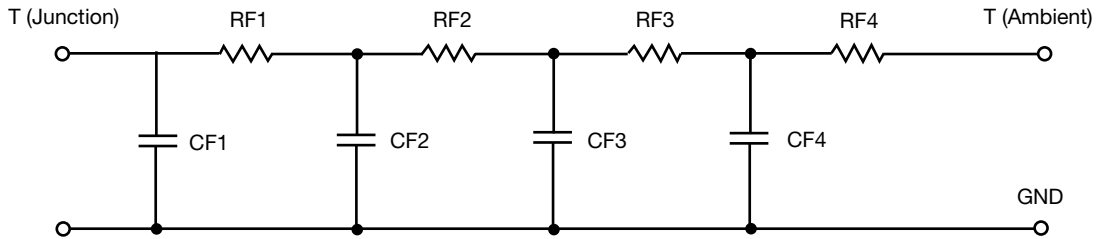
Note

- n/a indicates not applicable

This document is intended as a SPICE modeling guideline and does not constitute a commercial product datasheet. Designers should refer to the appropriate datasheet of the same number for guaranteed specification limits.



R-C THERMAL MODEL FOR FILTER CONFIGURATION



R-C VALUES FOR FILTER CONFIGURATION			
THERMAL RESISTANCE (°C/W)			
Junction to	Ambient	Case	Foot
RF1	N/A	266.8418m	N/A
RF2	N/A	161.0757m	N/A
RF3	N/A	42.8509m	N/A
RF4	N/A	33.2921m	N/A
THERMAL CAPACITANCE (Joules/°C)			
Junction to	Ambient	Case	Foot
CF1	N/A	17.6657m	N/A
CF2	N/A	66.4172m	N/A
CF3	N/A	378.3382m	N/A
CF4	N/A	5.7609m	N/A

Note

- n/a indicates not applicable

