

E Series Power MOSFET with Fast Body Diode

DESCRIPTION

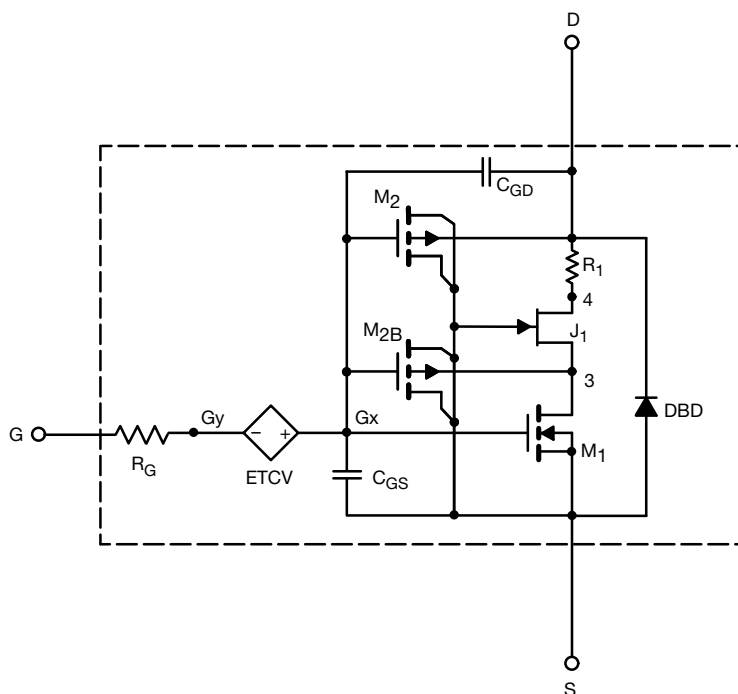
The attached SPICE model describes the typical electrical characteristics of the n-channel vertical DMOS. The subcircuit model is extracted and optimized over the -55 °C to 150 °C temperature ranges under the pulsed 0 V to 15 V gate drive. The saturated output impedance is best fit at the gate bias near the threshold voltage.

A novel gate-to-drain feedback capacitance network is used to model the gate charge characteristics while avoiding convergence difficulties of the switched C_{gd} model. All model parameter values are optimized to provide a best fit to the measured electrical data and are not intended as an exact physical interpretation of the device.

CHARACTERISTICS

- N-Channel Vertical DMOS
- Macro Model (Subcircuit Model)
- Level 3 MOS
- Apply for both Linear and Switching Application
- Accurate over the -55 °C to +125 °C Temperature Range
- Model the Gate Charge

SUBCIRCUIT MODEL SCHEMATIC



Note

- This document is intended as a SPICE modeling guideline and does not constitute a commercial product datasheet. Designers should refer to the appropriate datasheet of the same number for guaranteed specification limits.



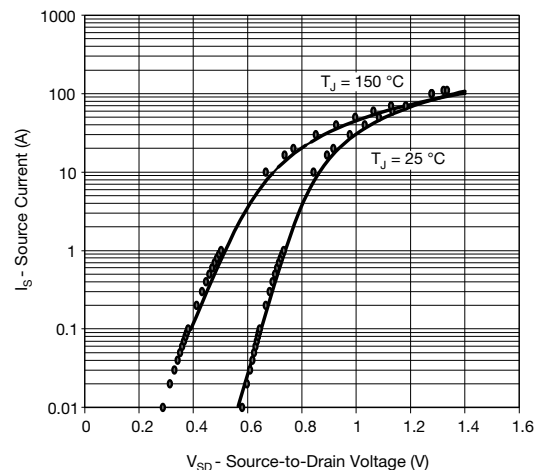
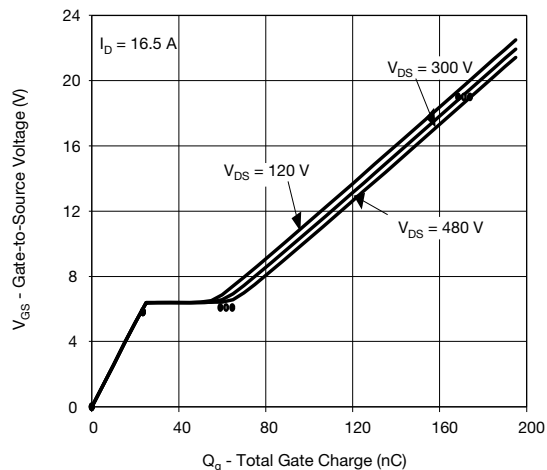
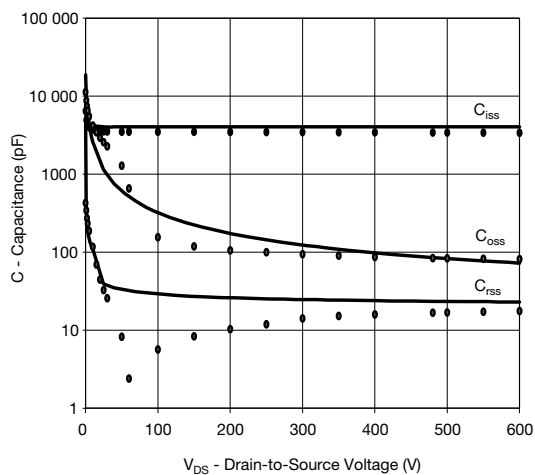
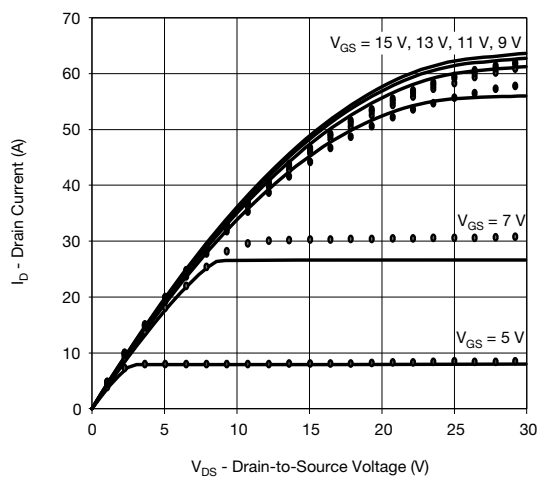
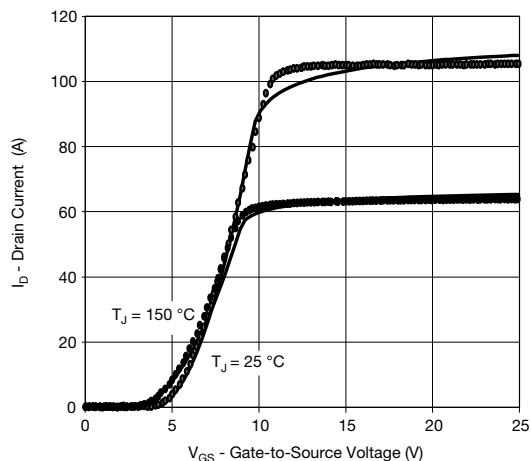
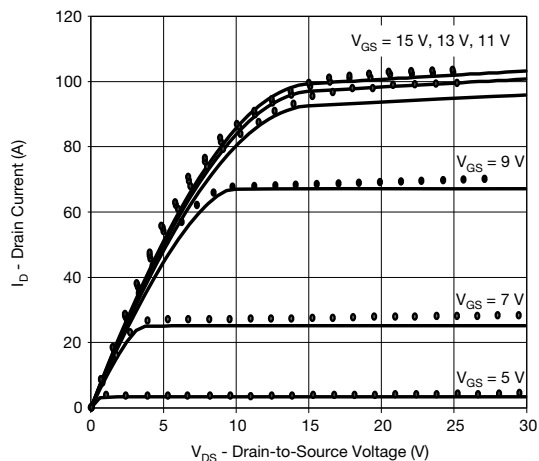
SPECIFICATIONS ($T_J = 25^\circ\text{C}$, unless otherwise noted)					
PARAMETER	SYMBOL	TEST CONDITIONS	SIMULATED DATA	MEASURED DATA	UNIT
Static					
Gate Threshold Voltage	$V_{GS(th)}$	$V_{DS} = V_{GS}$, $I_D = 250\ \mu\text{A}$	2.9	-	V
Drain-Source On-State Resistance ^a	$R_{DS(on)}$	$V_{GS} = 10\ \text{V}$, $I_D = 16.5\ \text{A}$	0.096	0.083	Ω
Forward Transconductance ^a	g_{fs}	$V_{DS} = 30\ \text{V}$, $I_D = 16.5\ \text{A}$	12	11	S
Diode Forward Voltage ^a	V_{SD}	$I_S = 16.5\ \text{A}$, $V_{GS} = 0\ \text{V}$	0.91	0.90	V
Dynamic^b					
Input Capacitance	C_{iss}	$V_{DS} = 100\ \text{V}$, $V_{GS} = 0\ \text{V}$, $f = 1\ \text{MHz}$	4080	3508	pF
Output Capacitance	C_{oss}		327	156	
Reverse Transfer Capacitance	C_{rss}		29	6	
Total Gate Charge	Q_g	$V_{DS} = 480\ \text{V}$, $V_{GS} = 10\ \text{V}$, $I_D = 16.5\ \text{A}$	95	100	nC
Gate-Source Charge	Q_{gs}		24	24	
Gate-Drain Charge	Q_{gd}		42	42	

Notes

- a. Pulse test; pulse width $\leq 300\ \mu\text{s}$, duty cycle $\leq 2\ \%$.
b. Guaranteed by design, not subject to production testing.



COMPARISON OF MODEL WITH MEASURED DATA ($T_J = 25^\circ\text{C}$, unless otherwise noted)



Note

- Dots and squares represent measured data.

Copyright: Vishay Intertechnology, Inc.