



R-C Thermal Model Parameters

DESCRIPTION

The parametric values in the R-C thermal model have been derived using curve-fitting techniques. R-C values for the electrical circuit in the Foster/tank and Cauer/filter configurations are included. When implemented in PSpice, these values have matching characteristic curves to the single-pulse transient thermal impedance curves for the MOSFET.

These RC values can be used in the PSpice simulation to evaluate the thermal behavior of the MOSFET junction temperature under a defined power profile. These techniques are described in application note AN609, "Thermal Simulation of Power MOSFETs on the PSpice Platform".

R-C THERMAL MODEL FOR TANK CONFIGURATION



R-C VALUES FOR TANK CONFIGURATION			
THERMAL RESISTANCE (°C/W)			
Junction to	Ambient	Case	Foot
RT1	n/a	123.7534m	n/a
RT2	n/a	41.8093m	n/a
RT3	n/a	67.2934m	n/a
RT4	n/a	67.1440m	n/a
THERMAL CAPACITANCE (Joules/°C)			
Junction to	Ambient	Case	Foot
CT1	n/a	347.0155m	n/a
CT2	n/a	9.5171m	n/a
CT3	n/a	7.2408m	n/a
CT4	n/a	82.6249m	n/a

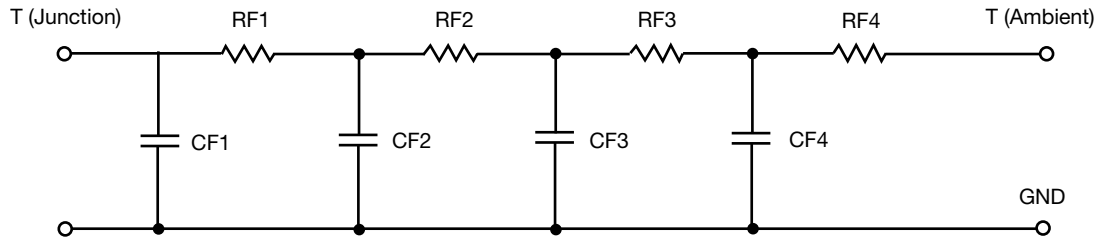
Note

- n/a indicates not applicable

This document is intended as a SPICE modeling guideline and does not constitute a commercial product datasheet. Designers should refer to the appropriate datasheet of the same number for guaranteed specification limits.



R-C THERMAL MODEL FOR FILTER CONFIGURATION



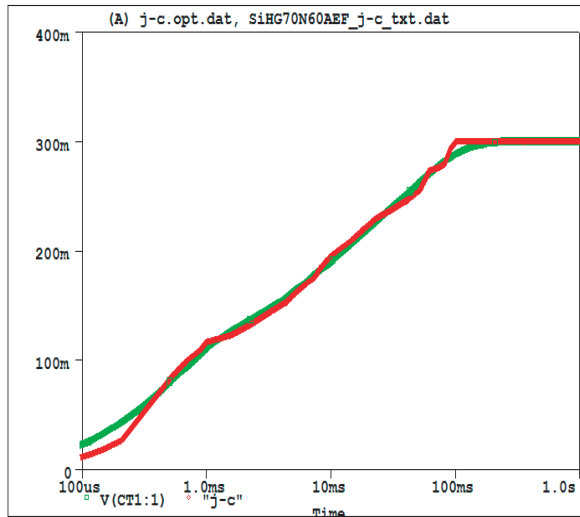
R-C VALUES FOR FILTER CONFIGURATION			
THERMAL RESISTANCE (°C/W)			
Junction to	Ambient	Case	Foot
RF1	n/a	121.4775m	n/a
RF2	n/a	70.8771m	n/a
RF3	n/a	34.5194m	n/a
RF4	n/a	73.1260m	n/a
THERMAL CAPACITANCE (Joules/°C)			
Junction to	Ambient	Case	Foot
CF1	n/a	3.8388m	n/a
CF2	n/a	75.8238m	n/a
CF3	n/a	14.2916m	n/a
CF4	n/a	523.8452m	n/a

Note

- n/a indicates not applicable



SiHG70N60AEF Tank j-c Temperature 27.0



SiHG70N60AEF Filter j-c Temperature 27.0

