

E Series Power MOSFET

DESCRIPTION

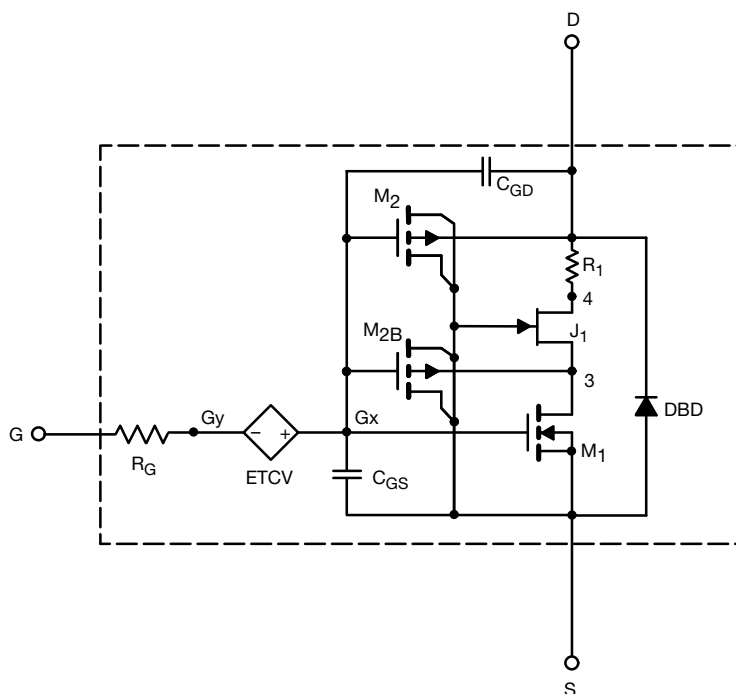
The attached SPICE model describes the typical electrical characteristics of the n-channel vertical DMOS. The subcircuit model is extracted and optimized over 25 °C to 150 °C temperature ranges under the pulsed 0 V to 15 V gate drive. The saturated output impedance is best fit at the gate bias near the threshold voltage.

A novel gate-to-drain feedback capacitance network is used to model the gate charge characteristics while avoiding convergence difficulties of the switched C_{gd} model. All model parameter values are optimized to provide a best fit to the measured electrical data and are not intended as an exact physical interpretation of the device.

CHARACTERISTICS

- N-channel vertical DMOS
- Macro model (subcircuit model)
- Level 3 MOS
- Apply for both linear and switching application
- Accurate over 25 °C to 150 °C temperature range
- Model the gate charge

SUBCIRCUIT MODEL SCHEMATIC



Note

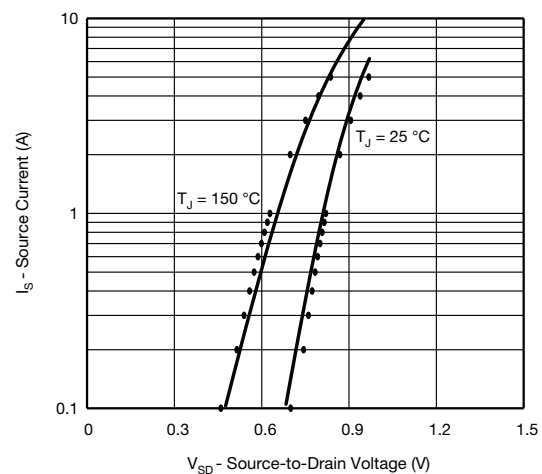
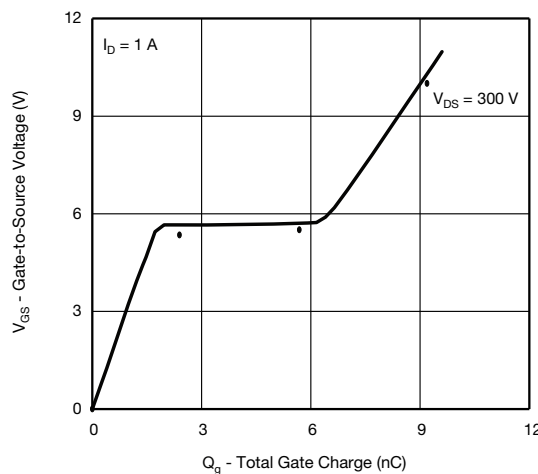
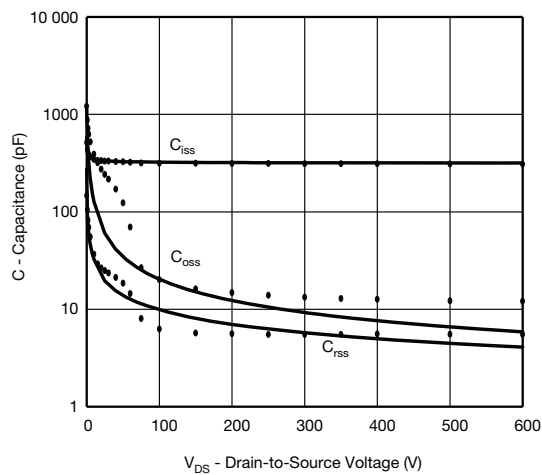
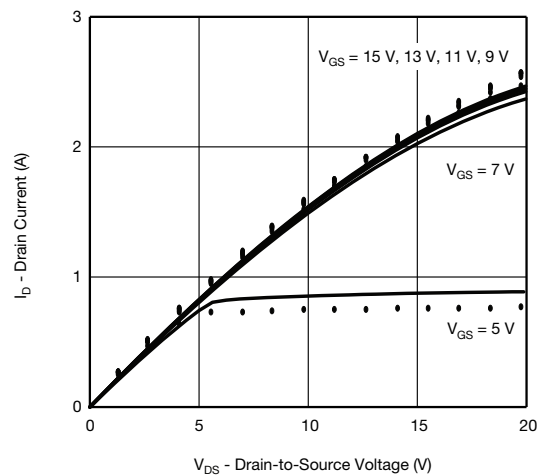
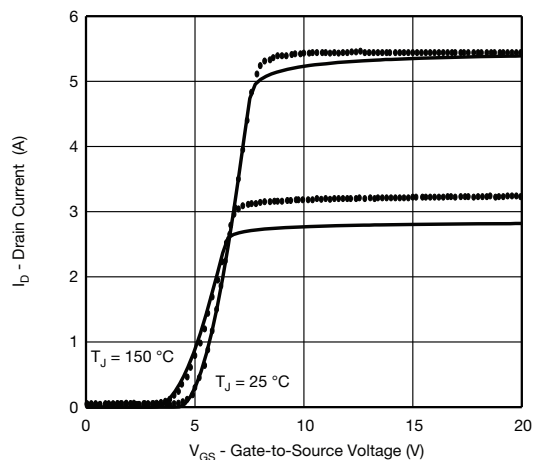
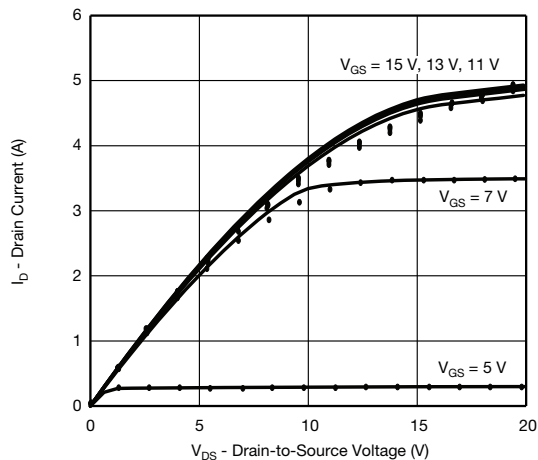
- This document is intended as a SPICE modeling guideline and does not constitute a commercial product datasheet. Designers should refer to the appropriate datasheet of the same number for guaranteed specification limits



SPECIFICATIONS (T _J = 25 °C, unless otherwise noted)					
PARAMETER	SYMBOL	TEST CONDITIONS	SIMULATED DATA	MEASURED DATA	UNIT
Static					
Gate-source threshold voltage	V _{GS(th)}	V _{DS} = V _{GS} , I _D = 250 μA	3	-	V
Drain-source on-state resistance	R _{DS(on)}	V _{GS} = 10 V, I _D = 1 A	2.30	2.38	Ω
Forward transconductance	g _{fs}	V _{DS} = 30 V, I _D = 1 A	1.3	1	S
Dynamic					
Input capacitance	C _{iSS}	V _{DS} = 100 V, V _{GS} = 0 V, f = 1 MHz	324	315	pF
Output capacitance	C _{OSS}		20	20	
Reverse transfer capacitance	C _{rSS}		4.4	6	
Total gate charge	Q _g	V _{DS} = 480 V, V _{GS} = 10 V, I _D = 1 A	9.2	9.8	nC
Gate-source charge	Q _{gs}		1.8	2.4	
Gate-drain charge	Q _{gd}		4	3.9	
Drain-Source Body Diode Characteristics					
Reverse recovery time	t _{rr}	T _J = 25 °C, I _F = I _S = 1 A, di/dt = 100 A/μs, V _R = 25 V	280	278	ns
Reverse recovery charge	Q _{rr}		2	0.9	μC



COMPARISON OF MODEL WITH MEASURED DATA ($T_J = 25^\circ\text{C}$, unless otherwise noted)



Note

- Dots and squares represent measured data

Copyright: Vishay Intertechnology, Inc.