

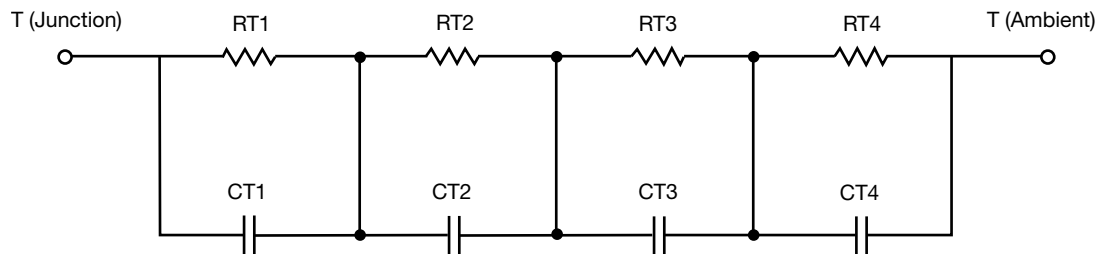
R-C Thermal Model Parameters

DESCRIPTION

The parametric values in the R-C thermal model have been derived using curve-fitting techniques. R-C values for the electrical circuit in the Foster/tank and Cauer/filter configurations are included. When implemented in PSpice, these values have matching characteristic curves to the single-pulse transient thermal impedance curves for the MOSFET.

These RC values can be used in the PSpice simulation to evaluate the thermal behavior of the MOSFET junction temperature under a defined power profile. These techniques are described in application note AN609, "Thermal Simulation of Power MOSFETs on the PSpice Platform".

R-C THERMAL MODEL FOR TANK CONFIGURATION



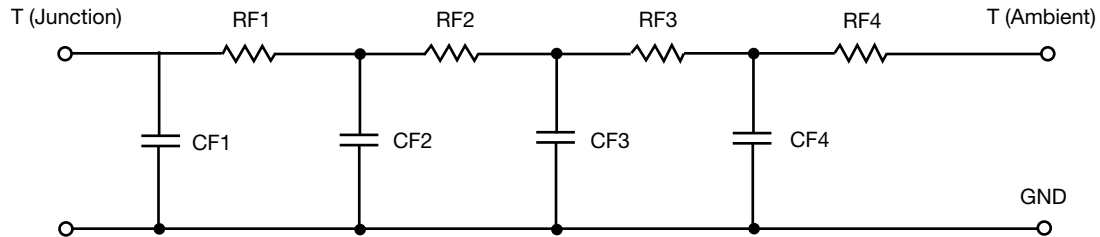
R-C VALUES FOR TANK CONFIGURATION

THERMAL RESISTANCE (°C/W)			
Junction to	Ambient	Case	Foot
RT1	n/a	341.2589m	n/a
RT2	n/a	2.9611	n/a
RT3	n/a	548.5960m	n/a
RT4	n/a	149.0451m	n/a
THERMAL CAPACITANCE (Joules/°C)			
Junction to	Ambient	Case	Foot
CT1	n/a	2.3397m	n/a
CT2	n/a	406.0569m	n/a
CT3	n/a	8.5337m	n/a
CT4	n/a	143.1415m	n/a

Note

- n/a indicates not applicable

This document is intended as a SPICE modeling guideline and does not constitute a commercial product datasheet. Designers should refer to the appropriate datasheet of the same number for guaranteed specification limits.

R-C THERMAL MODEL FOR FILTER CONFIGURATION

R-C VALUES FOR FILTER CONFIGURATION

THERMAL RESISTANCE (°C/W)			
Junction to	Ambient	Case	Foot
RF1	n/a	663.1711m	n/a
RF2	n/a	258.1654m	n/a
RF3	n/a	208.0635m	n/a
RF4	n/a	2.8706	n/a
THERMAL CAPACITANCE (Joules/°C)			
Junction to	Ambient	Case	Foot
CF1	n/a	2.0540m	n/a
CF2	n/a	12.9453m	n/a
CF3	n/a	61.7331m	n/a
CF4	n/a	337.4421m	n/a

Note

- n/a indicates not applicable

