



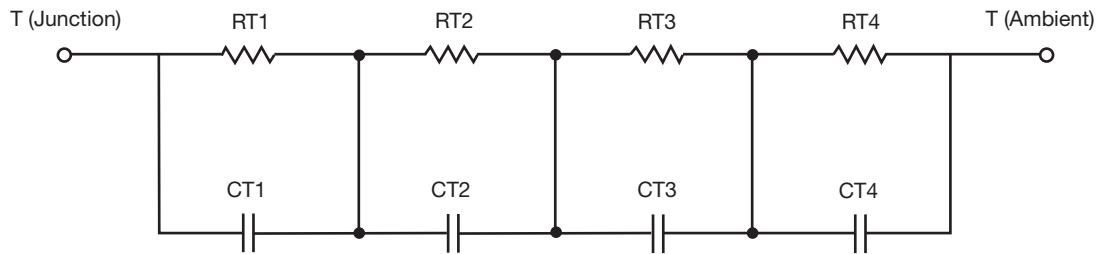
# R-C Thermal Model Parameters

## DESCRIPTION

The parametric values in the R-C thermal model have been derived using curve-fitting techniques. R-C values for the electrical circuit in the Foster/tank and Cauer/filter configurations are included. When implemented in PSpice, these values have matching characteristic curves to the single-pulse transient thermal impedance curves for the MOSFET.

These RC values can be used in the PSpice simulation to evaluate the thermal behavior of the MOSFET junction temperature under a defined power profile. These techniques are described in application note AN609, "Thermal Simulation of Power MOSFETs on the PSpice Platform".

## R-C THERMAL MODEL FOR TANK CONFIGURATION



R-C VALUES FOR TANK CONFIGURATION			
THERMAL RESISTANCE (°C/W)			
Junction to	Ambient	Case	Foot
RT1	n/a	366.7963u	n/a
RT2	n/a	272.1099m	n/a
RT3	n/a	137.1838m	n/a
RT4	n/a	266.8710m	n/a
THERMAL CAPACITANCE (Joules/°C)			
Junction to	Ambient	Case	Foot
CT1	n/a	4.1469m	n/a
CT2	n/a	3.1807m	n/a
CT3	n/a	6.0859m	n/a
CT4	n/a	280.9893u	n/a

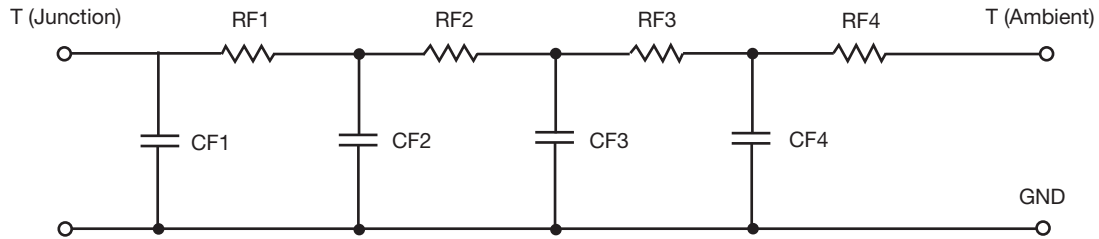
**Note**

- n/a indicates not applicable

This document is intended as a SPICE modeling guideline and does not constitute a commercial product datasheet. Designers should refer to the appropriate datasheet of the same number for guaranteed specification limits.



R-C THERMAL MODEL FOR FILTER CONFIGURATION



R-C VALUES FOR FILTER CONFIGURATION			
THERMAL RESISTANCE (°C/W)			
Junction to	Ambient	Case	Foot
RF1	n/a	286.9849m	n/a
RF2	n/a	355.9745m	n/a
RF3	n/a	23.9268m	n/a
RF4	n/a	12.8381m	n/a
THERMAL CAPACITANCE (Joules/°C)			
Junction to	Ambient	Case	Foot
CF1	n/a	220.9147u	n/a
CF2	n/a	1.5041m	n/a
CF3	n/a	54.5001m	n/a
CF4	n/a	4.7467m	n/a

Note

- n/a indicates not applicable

