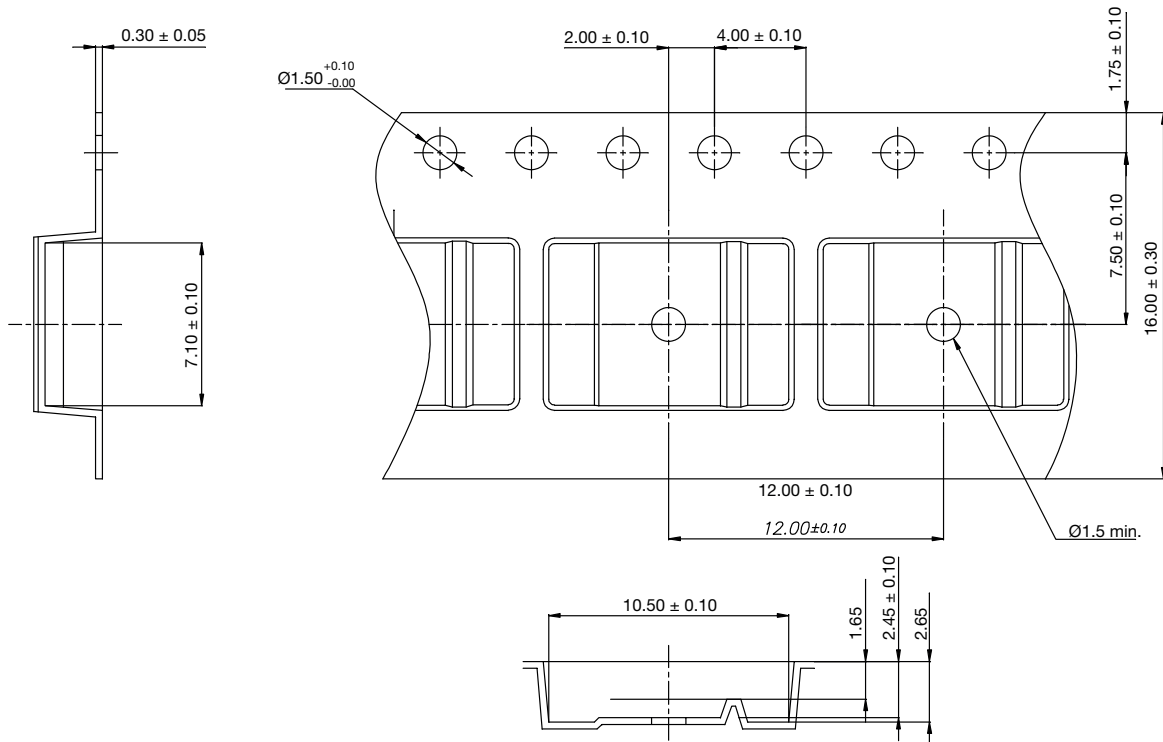


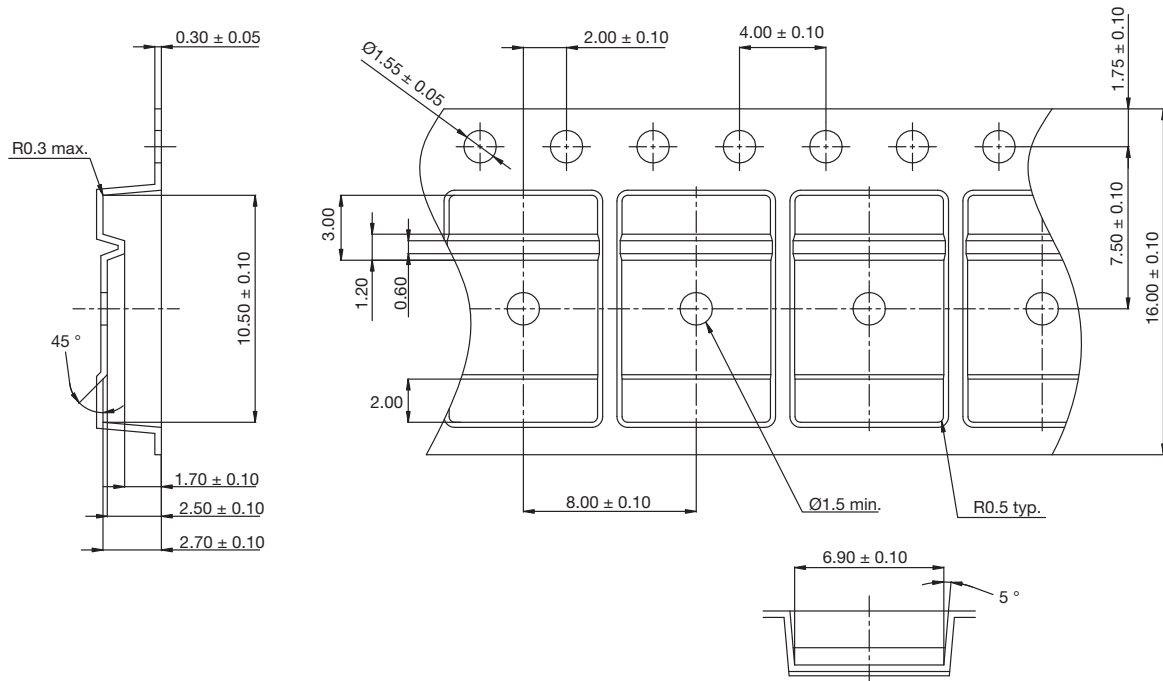


## TO-252 (HVM)

### T1 (TR)

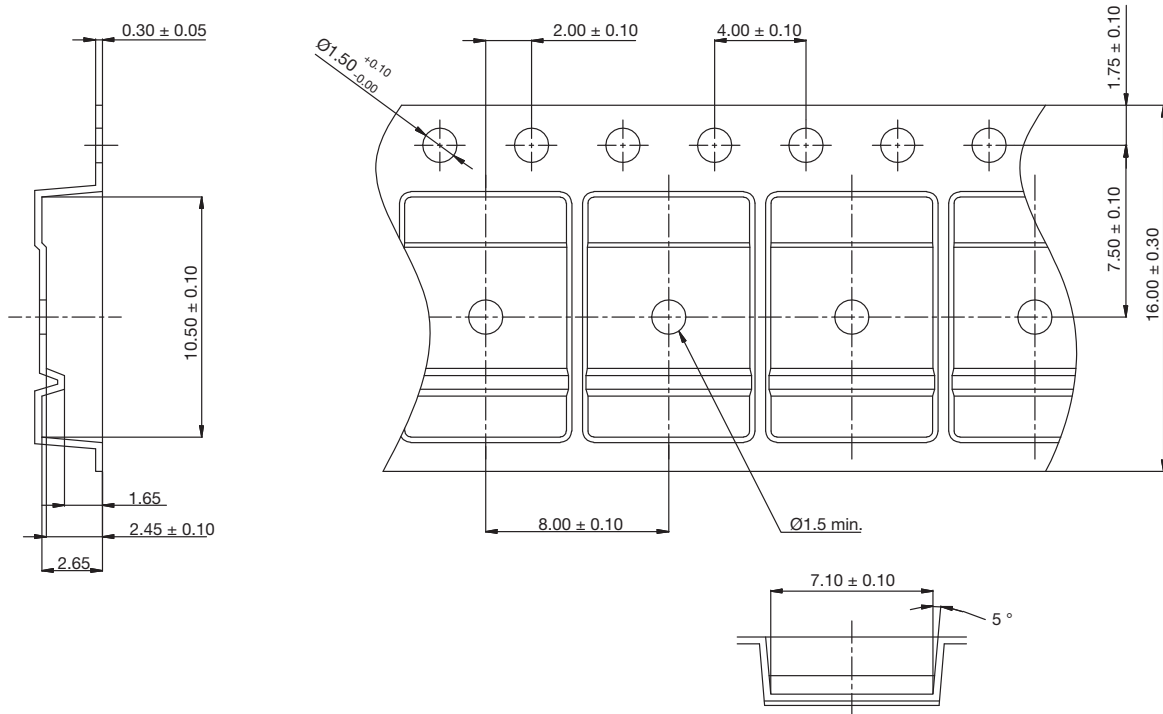


### T4 (TRL)





### T5 (TRR)



QUANTITY PER REEL	
T1 (TR)	2000
T4 (TRL)	3000
T5 (TRR)	3000

#### Notes

- (1) 10 sprocket hole pitch cumulative tolerance ± 0.2 mm
- (2) Camber not to exceed 1 mm in 250 mm
- (3) Material: black conductive polystyrene
- (4) A<sub>O</sub> and B<sub>O</sub> measured on a plane 0.3 mm above the bottom of the pocket
- (5) K<sub>O</sub> measured from a plane on the inside bottom of the pocket to the top surface of carrier
- (6) Pocket position relative to sprocket hole measured as true position, not pocket hole
- (7) Pocket center and pocket hole center must be same position

ECN: S24-1114-Rev. A, 04-Nov-2024  
 DWG: 93-5366-X