



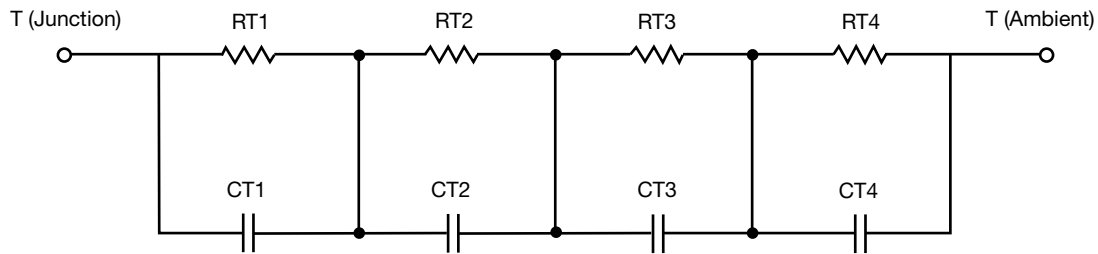
R-C Thermal Model Parameters

DESCRIPTION

The parametric values in the R-C thermal model have been derived using curve-fitting techniques. R-C values for the electrical circuit in the Foster/tank and Cauer/filter configurations are included. When implemented in PSpice, these values have matching characteristic curves to the single-pulse transient thermal impedance curves for the MOSFET.

These RC values can be used in the PSpice simulation to evaluate the thermal behavior of the MOSFET junction temperature under a defined power profile. These techniques are described in application note AN609, "Thermal Simulation of Power MOSFETs on the PSpice Platform".

R-C THERMAL MODEL FOR TANK CONFIGURATION



R-C VALUES FOR TANK CONFIGURATION			
THERMAL RESISTANCE (°C/W)			
Junction to	Ambient	Case	Foot
RT1	n/a	128.9969m	n/a
RT2	n/a	151.2804m	n/a
RT3	n/a	42.1671m	n/a
RT4	n/a	57.4355m	n/a
THERMAL CAPACITANCE (Joules/°C)			
Junction to	Ambient	Case	Foot
CT1	n/a	351.1552m	n/a
CT2	n/a	113.7964u	n/a
CT3	n/a	842.5367u	n/a
CT4	n/a	63.2062m	n/a

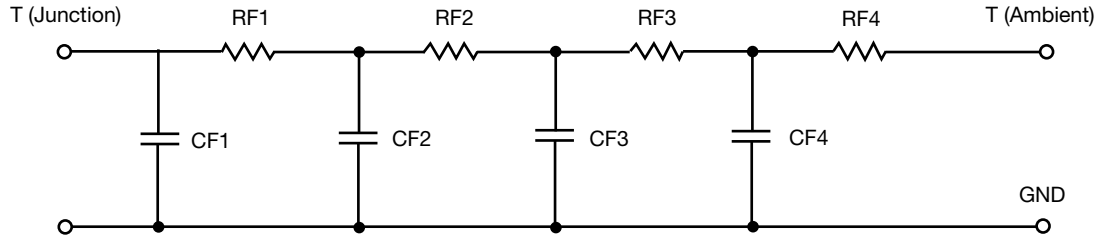
Note

- n/a indicates not applicable

This document is intended as a SPICE modeling guideline and does not constitute a commercial product datasheet. Designers should refer to the appropriate datasheet of the same number for guaranteed specification limits.



R-C THERMAL MODEL FOR FILTER CONFIGURATION



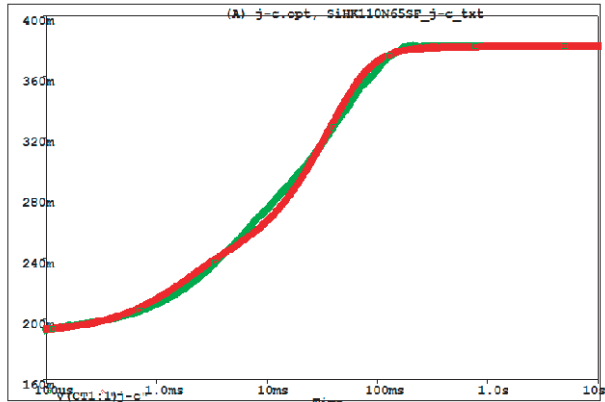
R-C VALUES FOR FILTER CONFIGURATION			
THERMAL RESISTANCE (°C/W)			
Junction to	Ambient	Case	Foot
RF1	n/a	168.0516m	n/a
RF2	n/a	2.0988m	n/a
RF3	n/a	54.1136m	n/a
RF4	n/a	154.7924m	n/a
THERMAL CAPACITANCE (Joules/°C)			
Junction to	Ambient	Case	Foot
CF1	n/a	15.3638u	n/a
CF2	n/a	228.3188u	n/a
CF3	n/a	7.4375m	n/a
CF4	n/a	198.6467m	n/a

Note

- n/a indicates not applicable



SiHK110N65SF Tank j-c Temperature: 27.0



SiHK110N65SF Filter j-c Temperature: 27.0

