



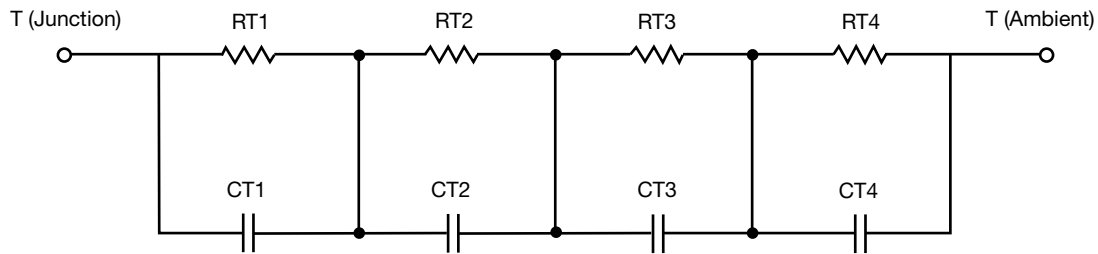
# R-C Thermal Model Parameters

## DESCRIPTION

The parametric values in the R-C thermal model have been derived using curve-fitting techniques. R-C values for the electrical circuit in the Foster/tank and Cauer/filter configurations are included. When implemented in PSpice, these values have matching characteristic curves to the single-pulse transient thermal impedance curves for the MOSFET.

These RC values can be used in the PSpice simulation to evaluate the thermal behavior of the MOSFET junction temperature under a defined power profile. These techniques are described in application note AN609, "Thermal Simulation of Power MOSFETs on the PSpice Platform".

## R-C THERMAL MODEL FOR TANK CONFIGURATION



R-C VALUES FOR TANK CONFIGURATION			
THERMAL RESISTANCE (°C/W)			
Junction to	Ambient	Case	Foot
RT1	n/a	105.8558m	n/a
RT2	n/a	51.5473m	n/a
RT3	n/a	7.8545m	n/a
RT4	n/a	74.7211m	n/a
THERMAL CAPACITANCE (Joules/°C)			
Junction to	Ambient	Case	Foot
CT1	n/a	459.5331m	n/a
CT2	n/a	57.4541m	n/a
CT3	n/a	21.8526m	n/a
CT4	n/a	50.8321m	n/a

- Note**
- n/a indicates not applicable

This document is intended as a SPICE modeling guideline and does not constitute a commercial product datasheet. Designers should refer to the appropriate datasheet of the same number for guaranteed specification limits.



R-C THERMAL MODEL FOR FILTER CONFIGURATION



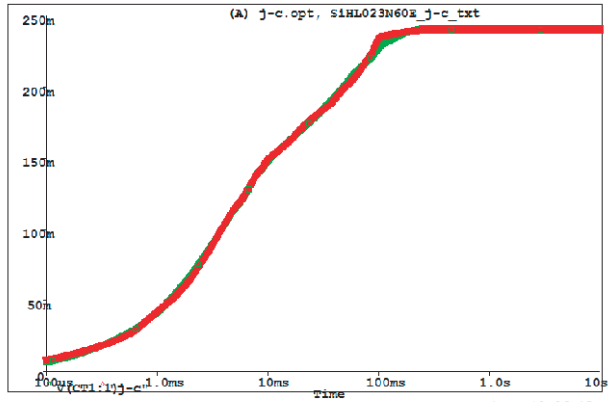
R-C VALUES FOR FILTER CONFIGURATION			
THERMAL RESISTANCE (°C/W)			
Junction to	Ambient	Case	Foot
RF1	n/a	22.9903m	n/a
RF2	n/a	86.4534m	n/a
RF3	n/a	44.1040m	n/a
RF4	n/a	86.8039m	n/a
THERMAL CAPACITANCE (Joules/°C)			
Junction to	Ambient	Case	Foot
CF1	n/a	12.9718m	n/a
CF2	n/a	9.0991m	n/a
CF3	n/a	46.2567m	n/a
CF4	n/a	479.0530m	n/a

Note

- n/a indicates not applicable



SiHL023N60E Tank j-c Temperature: 27.0



SiHL023N60E Filter j-c Temperature: 27.0

