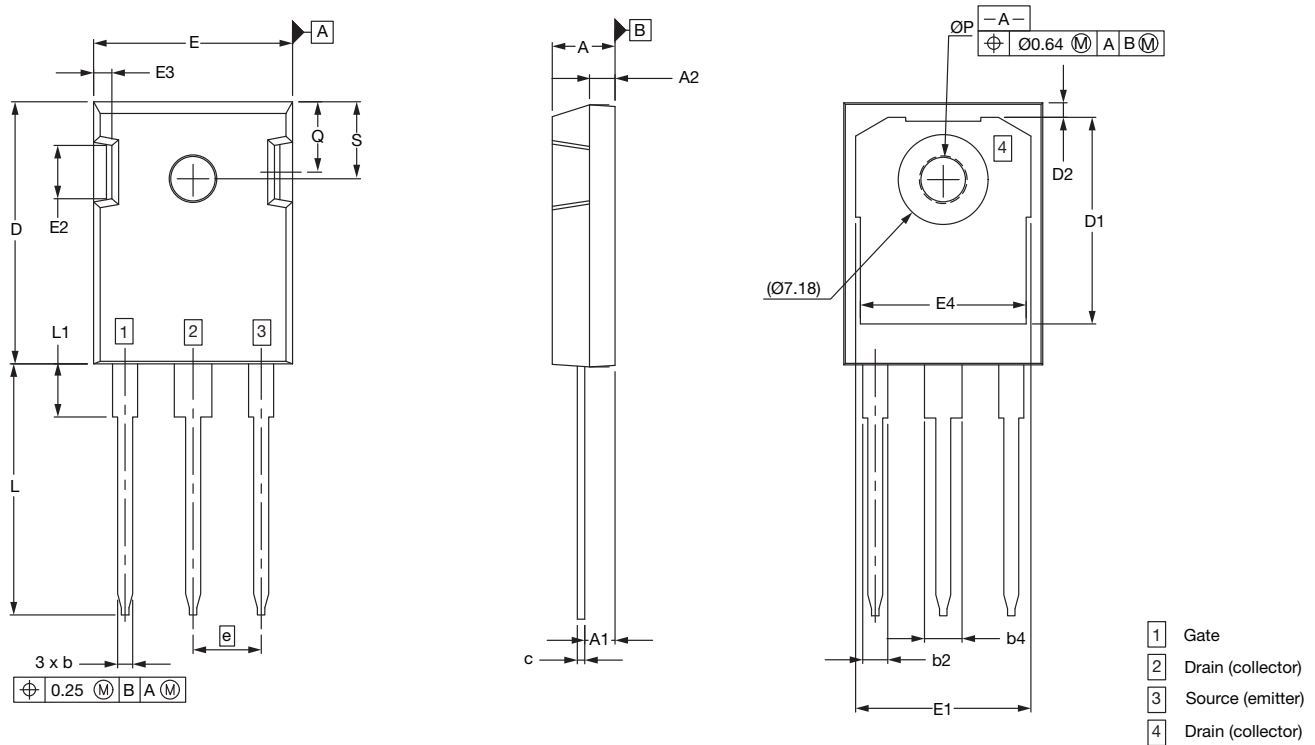




### Case Outline for TO-247AD 3L

**FACILITY CODE: N**



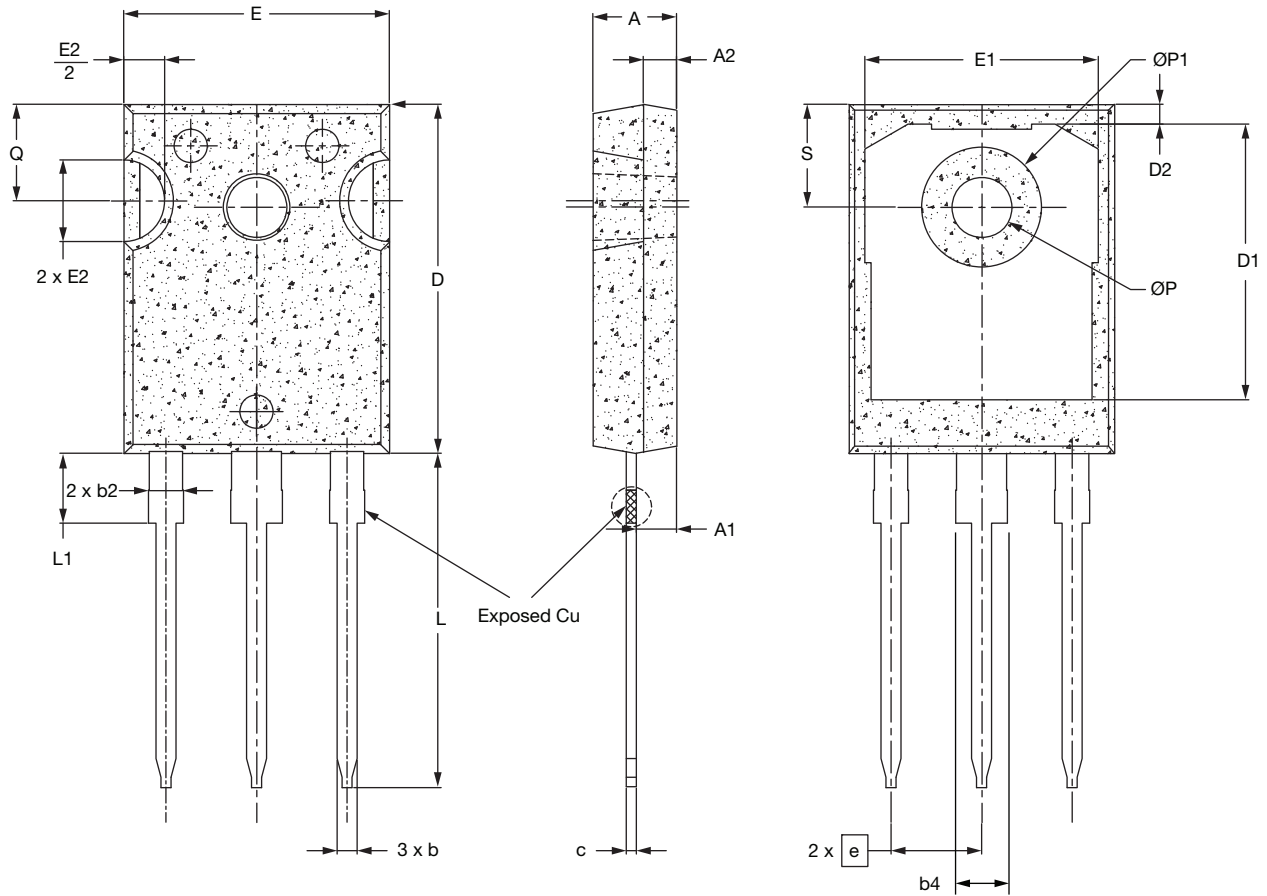
DIM.	MILLIMETERS	
	MIN.	MAX.
A	4.83	5.21
A1	2.29	2.54
A2	1.91	2.16
b	1.07	1.33
b2	1.91	2.41
b4	2.87	3.38
c	0.55	0.68
D	20.80	21.10
D1	16.25	17.65
D2	0.95	1.25
E	15.75	16.13
E1	13.10	14.15
E2	3.68	5.10
E3	1.00	1.90
E4	12.38	13.43
e	5.44 BSC.	
N	3	
L	19.81	20.32
L1	4.10	4.40
ØP	3.51	3.65
Q	5.49	6.00
S	6.04	6.30

**Notes**

- All metal surfaces: tin plated (MATTE), except area of cut
- Dimensioning and tolerancing confirm to ASME Y14.5M-1994
- All dimensions are in millimeters
- This drawing will meet all dimensions requirement of JEDEC outlines TO-247 AD



## FACILITY CODE: 9





DIM.	MILLIMETERS		
	MIN.	NOM.	MAX.
A	4.83	5.02	5.21
A1	2.29	2.41	2.55
A2	1.50	2.00	2.49
b	1.12	1.20	1.33
b2 <sup>(1)</sup>	1.91	2.00	2.39
b4 <sup>(1)</sup>	2.87	3.00	3.22
c	0.55	0.60	0.69
D <sup>(2)</sup>	20.80	20.95	21.10
D1 <sup>(3)</sup>	16.25	16.55	17.65
D2	0.51	1.19	1.35
E <sup>(2)</sup>	15.75	15.94	16.13
E1 <sup>(3)</sup>	13.46	14.02	14.16
E2	4.32	4.91	5.49
e	5.44 BSC.		
L	19.81	20.07	20.32
L1 <sup>(4)</sup>	4.10	4.19	4.40
ØP <sup>(5)</sup>	3.56	3.61	3.65
ØP1	7.19 ref.		
Q	5.39	5.79	6.20
S	6.04	6.17	6.30

ECN: E24-0229-Rev. A, 13-May-2024  
DWG: 6118

### Notes

- Package reference: JEDEC TO-247, variation AD
- All dimensions are in mm
- Slot required, notch may be rounded
- <sup>(1)</sup> Dimension b2 and b4 does not include dambar protrusion
- <sup>(2)</sup> Dimension D and E do not include mold flash
- <sup>(3)</sup> Thermal pad contour optional within dimension D1 and E1
- <sup>(4)</sup> Lead Finish Uncontrolled In L1
- <sup>(5)</sup> ØP to have a draft angle of 1.5 ° ref. to the top of the part with hole diameter of 3.91mm