



The DNA of tech.

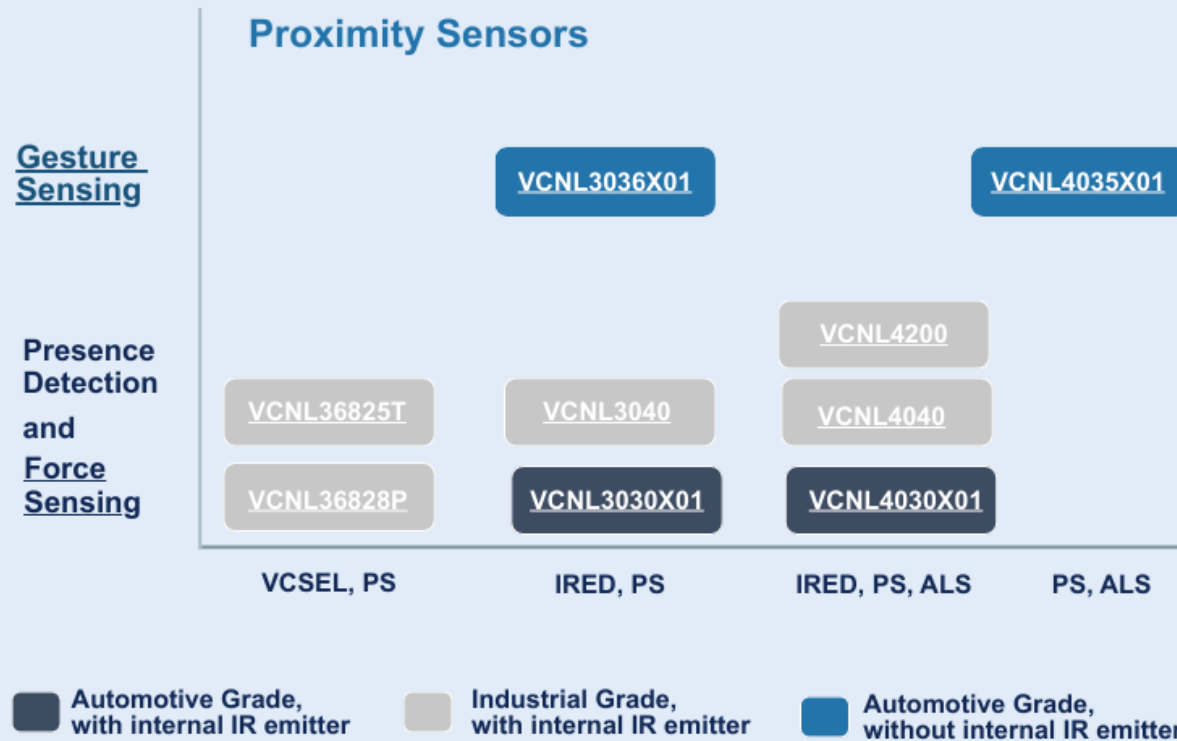
Touchless Switching

ENHANCING CONVENIENCE AND HYGIENE

Touchless switching technology enables hands-free control for various applications, improving convenience, hygiene, and automation.

In the automotive sector, it is commonly used for focus lighting in the car glove box area, providing seamless illumination when needed.

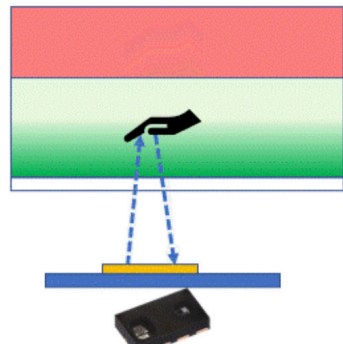
In non-automotive applications, it enhances soap dispensers, hand dryers, wake-up detection systems, monitors, automatic doors, IoT devices, thermostats, and home automation displays by enabling interaction without physical contact.





The DNA of tech.

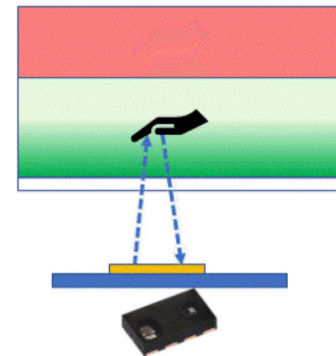
Object enters the detection zone, the threshold is crossed and the application is turned on



Application status



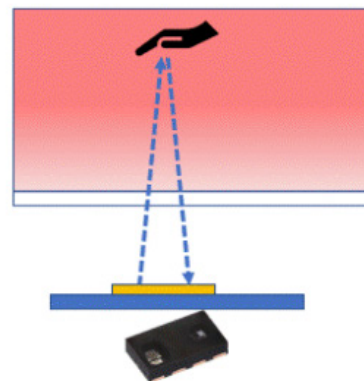
Object enters the detection zone, the threshold is crossed and the application is turned on



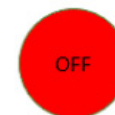
Application status



The object is outside of the defined detection zone.
The threshold is not yet crossed and the application remains off



Application status



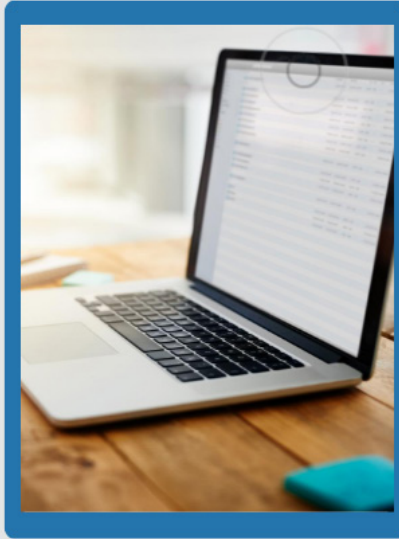


The DNA of tech.

APPLICATIONS



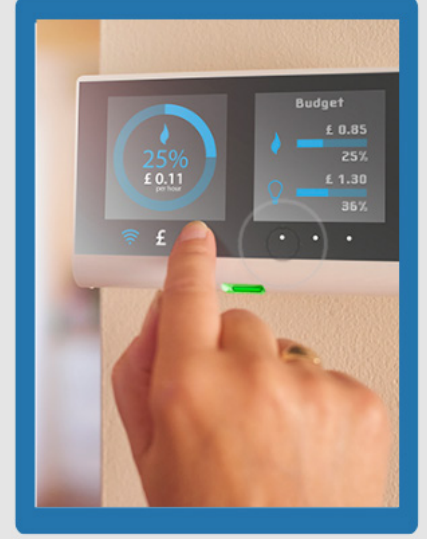
Automotive



Wake-Up Detection



Non-Automotive



IoT Devices