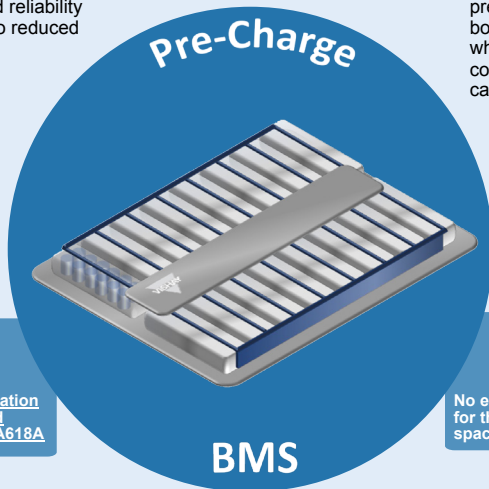


# EV Battery Pre-Charge

## With Automotive-Qualified Optocouplers

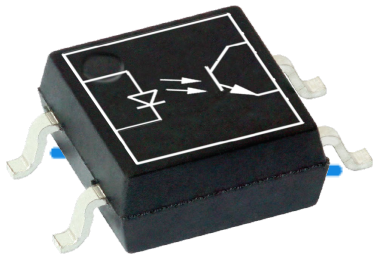
Managing the inrush current with a VOMDA1271 or VOMA617 increases the lifespan and reliability of EV battery packs due to reduced stress while switching.

Optically isolated components are used to trigger and monitor pre-charging from the control board and provide feedback when the pre-charge is completed and the main switch can be activated safely.



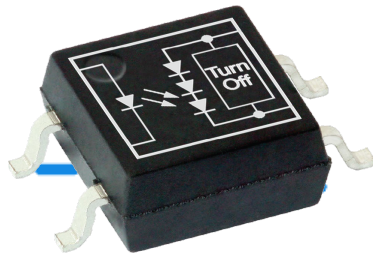
Try it out with our pre-charge evaluation board → Evaluation Board VOMA618A

No external power supply is needed for the VOMDA1217. This saves space and cost on the HV side.



**VOMA617**

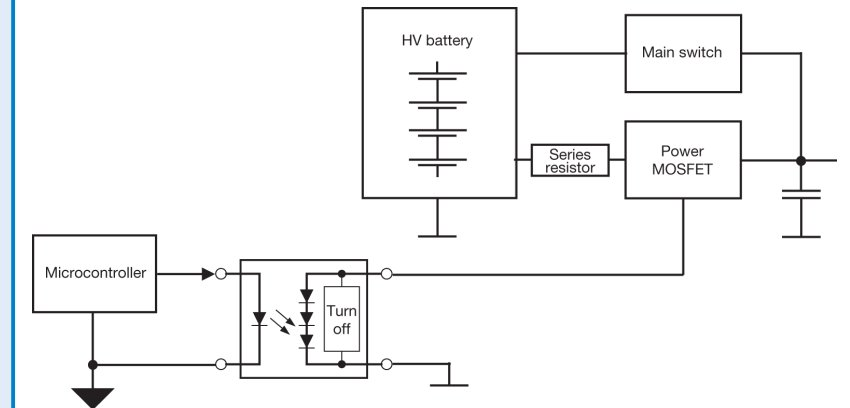
Automotive transistor coupler in low profile SOP-4 package



**VOMDA1271**

Automotive MOSFET driver in low profile SOP-4 package with integrated turn-off circuit for extra fast switching

## Application Schematic



For questions: [optocoupleranswers@vishay.com](mailto:optocoupleranswers@vishay.com)

IG31411782-2303