



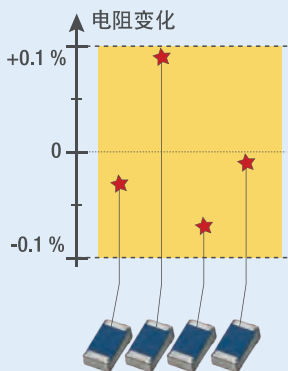
排阻

满足任意电阻比要求

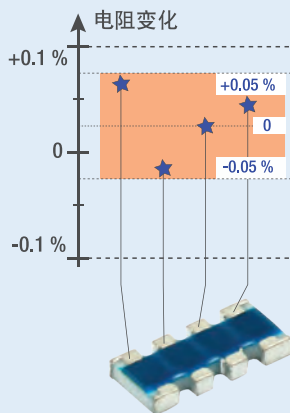
快速了解

公差

绝对公差

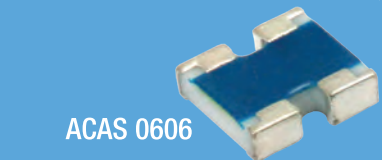


相对公差 (匹配)

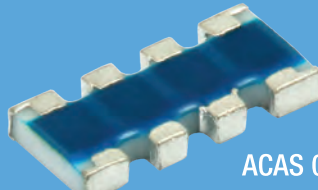


薄膜片式排阻

ACAS 0606

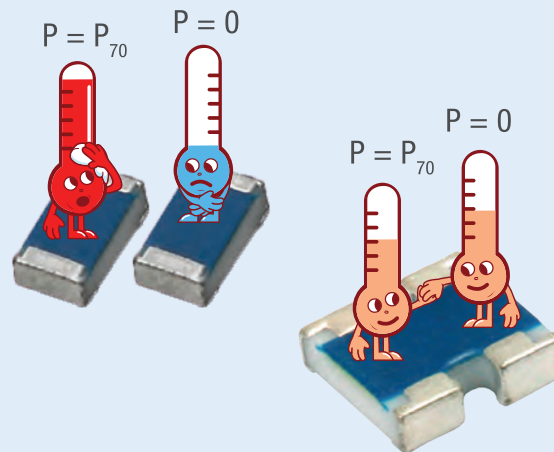


ACAS 0612



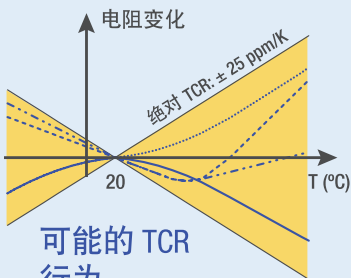
4 个或 8 个引脚

热耦合

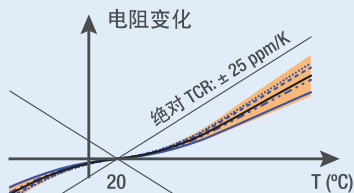


温度系数

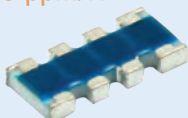
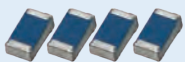
绝对温漂 (TCR)



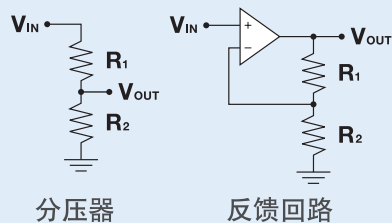
相对 TCR (跟踪)



相对 TCR:
± 5 ppm/K



应用



分压器

反馈回路



汽车



DC/DC
转换器



测量设备

对等元件老化漂移比较

分压器电阻比：整个生命周期的老化情况

