



The DNA of tech.®

Form A Solid-State Relay in Space-Saving SOP-4 Package

Device Is Industry's First to Offer AEC-Q102 Qualification and a 100 V Load Voltage

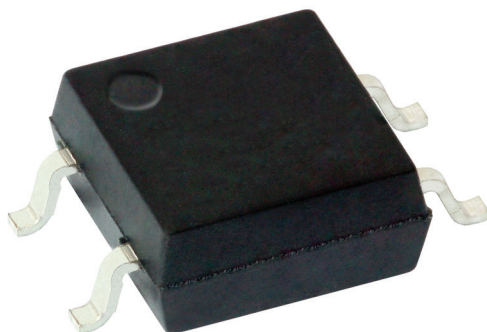


ADVANTAGE

Automotive device delivers industry's fastest turn-on and turn-off times of 0.1 ms typical and highest operating temperature to +125 °C.

KEY PRODUCT FEATURES

- ✓ Load current of 100 mA
- ✓ Isolation voltage of 3750 VRMS
- ✓ Provides clean, bounce-free switching
- ✓ Extreme low leakage current = 1 nA



RESOURCES



MARKETS AND APPLICATIONS



CONNECTIVITY

- Telecom Mobile Infrastructure



MOBILITY

- Automotive
- Automotive Electrification (e-Powertrain)
- Agricultural Equipment



ENERGY SECTOR

- Distribution and Management



INDUSTRIAL

- Automation, Drives, and Tools
- Infrastructure
- Home and Building Controls

ADDITIONAL BENEFITS

- No moving parts for long life
- Microcontroller-compatible
- Built-in turn-off circuit to achieve fast turn-off
- Small footprint and easy application

The fast turn-off time of the optically isolated device is a result of its integrated turn-off circuit, while its combination of a state of the art infrared emitter and photovoltaic diode array delivers its fast turn-on time. This switching performance makes the solid-state relay ideal for safety-critical applications, while its compact SOP-4 package saves space over competing solutions in the DIP-4 package.

